

# KILLARK®

## **WARM LED SOLUTIONS**

*..... Harsh and Hazardous Products .....*

[www.hubbell-killark.com](http://www.hubbell-killark.com)



Harsh & Hazardous



SECTION L

# KILLARK

*Killark*  
*Now Offers*








# Warm LED Colors!







WARM  
WHITE

COOL  
WHITE



### LIGHTING INDEX

PRODUCT	PAGE NO.	Type 4 (or 4X or IP66)	Class I, Div. 2 / Zone 2	Class I, Zone 2 Ex nR	Class II / III Div. 1	Class II / III Div. 2	Class I, Div. 1 C, D / Zone 1	Class I, Div. 1 A, B, C, D / Zone 1	IECEX Zone 1	ATEX Zone 1	IECEX Zone 2	ATEX Zone 2
 LAL Series .....	2-5	X	X		X	X					X	X
 LALFP Series .....	6-9											
 L1L .....	10-12											
 MBL Series .....	14-15	X	X		X	X						
 VM1L Series .....	16-19	X	X		X	X						
 VM2L & VM4L Series .....	20-23	X	X		X	X					X	X
 EML Series .....	24-25	X	X		X	X	X					

PRODUCT	PAGE NO.	Type 4 (or 4X or IP66)	Class I, Div. 2 / Zone 2	Class I, Zone 2 Ex nR	Class II / III Div. 1	Class II / III Div. 2	Class I, Div. 1 C, D / Zone 1	Class I, Div. 1 A, B, C, D / Zone 1	IECEX Zone 1	ATEX Zone 1	IECEX Zone 2	ATEX Zone 2
 EZL Series .....	26	X	X		X	X	X					
 EAC/EACH Series .....	27											
 KFL Series .....	29	X	X		X	X					X	X
 KFLH Series .....	30	X	X		X	X					X	X
 KFL2H Series .....	31	X	X		X	X					X	X
 MCX Cable Glands .....	32-35											



# LAL/LALXE/LALC SERIES

# KILLARK

LOW PROFILE LINEAR ALUMINUM LED • EXCLUSIVE DESIGN FEATURES

High temperature rated silicone gasketing provides Type 4X & IP66 sealing.



Diffused



Clear

### 2 Lens Choices:

- Clear for maximum lumens
- Diffused for glare control

Looping Terminal Blocks under Wiring Access Plate(s).



### Optional Through Wiring

2 Access Plates for feed through wiring



### Battery

E5, E13 and E26 models include internal Emergency battery systems to 50°C suitability

### Surge

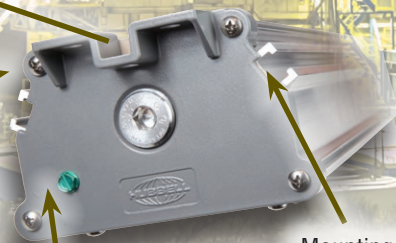
Standard with internal 20kA/10kA Supplemental Surge Protection

Endcaps standard with 1 x 3/4" hub. 1/2" NPT and M20 available.



Shown with LAL-SB Height adjustable Swivel Brackets

End Caps include feet for direct ceiling mounting and safety cable connection



Mounting Slots on back and at 45°

### Earth

External Earth Ground for IECEx requirement



### LINEAR LED TECHNOLOGY



## LINEAR<sup>LITE</sup>® \*

\* marca registrada MEXICO

### FEATURES-SPECIFICATIONS

#### Applications

Linear LED Luminaires are designed for installations where moisture, dirt, dust, corrosion and vibration may be present, and Type 3, 4X, IP66 areas where wind, water, snow or high ambients can be expected. They can be used in locations made hazardous by the presence of flammable vapors or gases or combustible dusts as defined by the NEC/CEC/IECEX & INMETRO.

Typical applications include land based oil rigs, offshore oil platforms, dockside installations, chemical and petrochemical processing facilities, sewage treatment plants, garages, storage facilities, tunnels, and grain/food facilities.

**ABS** (American Bureau of Shipping) type approval for use on decks, vessels, platforms, barges, ships and boats. Also suitable for docks and marinas.

#### Compliances

- UL-8750 for LED lighting
- ANSI/UL 1598(A)
- UL-844 Standard for lighting fixtures for hazardous locations, Class I, Division 2; Class II, Divisions 1 and 2; Class III
- CSA C22.2 no. 137-M1981 electric luminaires for use in hazardous locations
- IEC suffix Zone 2/21 to IEC 60079-0, 60079-15, 60079-31 Standards
- Enclosed and gasketed
- Type 3, 4X
- IP66

Supplemental **20KA/10KV Surge Protection** is **standard** (for 120-277 VAC models)  
**10KA/10KV Surge Protection** (for 347-480 VAC)

#### Materials

- Housing – one piece natural finish < .1% copper-free aluminum extrusion
- Endcaps & wiring – Access covers are copper-free (< .4%) aluminum with gray baked powder epoxy-polyester finish, electrostatically applied for complete uniform corrosion resistance.
- External screws are 316 stainless steel
- Lens – Impact resistant polycarbonate lens available in diffuse or clear

#### LAL & LALxE Product Features

- LALxE models have “built-in” battery backup for 90 or 180 minute emergency exit
- Shallow design minimizes profile in work areas with low ceiling heights
- Diffuse Lens Standard to minimize glare; Clear Lens available
- Polycarbonate Single Lens 18W to 60W; Double Lens model 80W & 120W
- Slot Back Design allows multiple mounting access points across length – slots can also be used with 5/16” or 8mm bolts & nuts, 3 housing slots, 1 center back and 2 at 45°.
- Variety of mounting options including swivel brackets, wall, ceiling brackets, or beam clamps
- End Caps each have 2 mounting feet built-in plus a safety strap attachment point

**Class I, Div. 2, Groups A, B, C, D**  
**Class I, Zone 2, Groups IIC, IIB, IIA**  
**Class II, Div. 1 & 2, Groups E, F, G**  
**AEx nAll, Ex nAll**  
**Wet Locations**  
**Type 4X**  
**IP66**  
**Marine Rated (US only)**

Certified - File LR11713

**IECEX Rated**  
**Zone 2 and Zone 21 areas**  
**Ex nA IIC T6 to T3, Gc**  
**Ex tb IIC T95°C Db**  
**Tamb -50°C < Tz < +65°C, IP66**

**IECEX Certificate**  
**QPS 15.0010**

**ATEX Certificate**  
**CML 15ATEX4081X (nA)**  
**&**  
**CML15ATEX3082X (tb)**

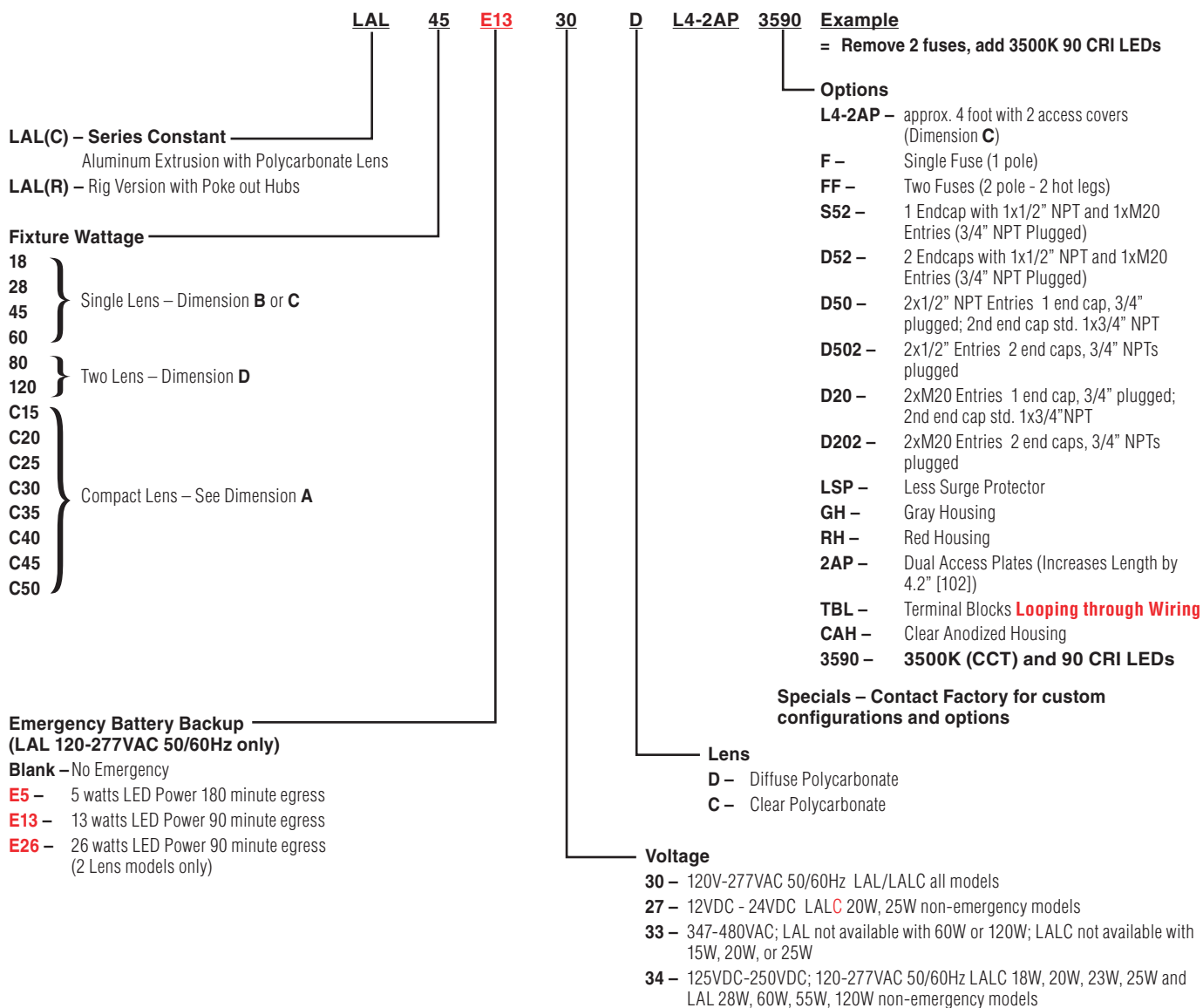
- Standard unit End Caps each have single a 3/4” NPT hub, and fixture is furnished with one 3/4” close-up plug and two 3/4” to 1/2” reducers – provides out of the box 1/2” dead-end to 3/4” feed-through flexibility. Metric openings are available.
- Standard LALs have one wiring Access Plate for easy access to driver leads.

#### LED Features and Standards

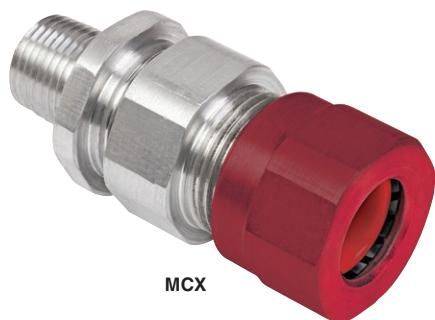
- Many Midpower LEDs blend light to simulate fluorescent tubes
- Chromaticity outputs: standard – 5000K 70 CRI  
**3590 option – 3500K 90 CRI**
- Energy Savings – High lumens per watt
- LED Array Life – 100,000+ hours with 70% initial lumens
- Long Fixture Life – 50,000 - 55,000 maintenance free hours
- Ambient suitability -40°C to 65°C (see tables). **-20°C to 50°C Ambient suitability for Emergency models.**
- Instant On – Including after power interruption
- World Voltage 120 - 277VAC 50/60Hz
- Solder-LESS LED Board Connections – Vibration Resistant



## CATALOG LOGIC



## CABLE GLAND ORDERING OPTIONS



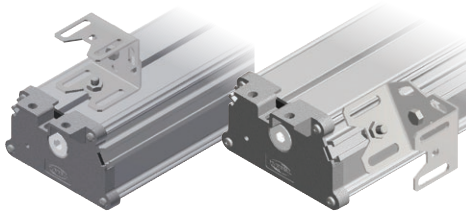
CATALOG NUMBER	ENTRY THREAD SIZE (NPT)	CABLE ACCEPTANCE DETAILS	
		DIAMETER 'C'	
		MIN.	MAX.
MCX1B	1/2"	0.51" (13.0)	0.63" (16.0)
MCX1C	1/2"	0.60" (15.2)	0.82" (20.8)
MCX2	3/4"	0.73" (18.5)	1.03" (26.2)

For entire series, please see page 32.



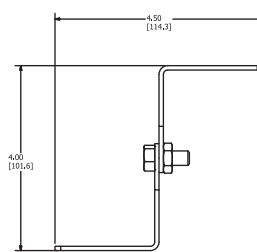
### ACCESSORIES AND REPLACEMENT PARTS

ACCESSORIES AND REPLACEMENT PARTS	
LAL-SB	Swivel Bracket Set w/ Adjustable Height; includes 5/16" bolts/nuts/lock-washers for attachment to LAL(C) "slots"; can also be attached to end cap mounting feet with FBO bolts.
LZCB	Ceiling Bracket Set with Stainless Steel Bolts to attach to LAL(C) "slots"
LZWB	Wall Bracket Set with Stainless Steel Bolts to attach to LAL(C) "slots"
LAL-BC	Steel/malleable Iron with Zinc electroplate for corrosion resistance; includes Stainless Steel Bolts to attach to LAL(C) "slots"
LAL-EB	Eyebolt Set with Stainless Steel Bolts to attach to LAL(C) "slots"
VMSC10	10' Stainless Steel Safety Cable with loop grip
LALG	Stainless Guard for 1 LAL Lens, order two for 2 lens models
LALCG	LALC Stainless Guard
LAL-LENSCLR	Single Clear Lens with Gasket for LAL Series
LAL-LENSDIF	Single Diffuse Lens with Gasket for LAL Series
LALC-LENSCLR	Single Clear Lens with Gasket for LALC Series
LALC-LENSDIF	Single Diffuse Lens with Gasket for LALC Series
LAL-RIG-CB	Rig Mounting Style Ceiling Bracket
LAL-RIG-WB	Rig Mounting Style Wall Bracket
RIG-LALC	Rig End Caps for LALC

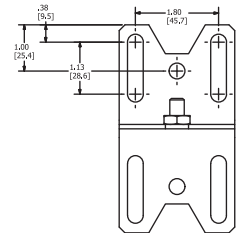
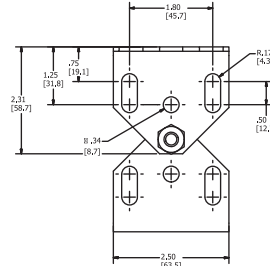


LAL-SB on Center Slot

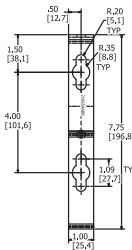
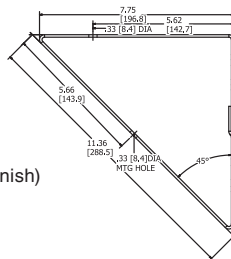
LAL-SB on 45° Slot



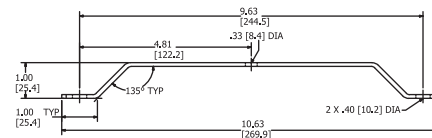
LAL-SB Dimensions – extended shown



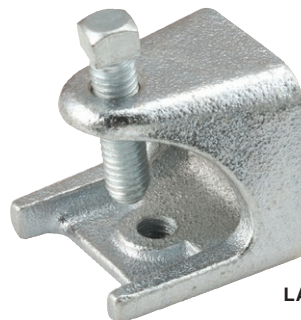
Wall Bracket Set  
Part Number LZWB  
Stainless Steel (natural finish)



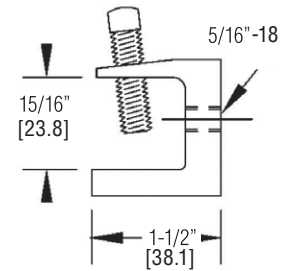
Ceiling Bracket Set  
Part Number LZCB  
Stainless Steel (natural finish)



VMSC10 Safety Cable



LAL-BC Beam Clamp





# LALFP

## Linear LED Food Processing Fixture

- Maintenance free long-lasting LEDs

- NSF Certified with Impact Resistant polycarbonate lens

- All exterior stainless steel hardware

- Large wiring access for ease of installation

- Extremely durable copper-free aluminum mounting feet & access plate with anodized aluminum housing

- 90 or 180 minute emergency with Self-diagnostics in accordance with NFPA 101® Life Safety Code





### LINEAR LED TECHNOLOGY



**Approved**

**LINEAR<sup>LED</sup>**® \*

\* marca registrada MEXICO

#### FEATURES-SPECIFICATIONS

##### Applications

Linear LED Luminaires are designed for food processing installations where moisture, corrosion and vibration may be present, and Type 3, 4X, IP66/IP67. They can be used in locations made hazardous by the presence of flammable vapors or gases or combustible dusts as defined by the NEC/CEC.

Typical applications include non-food zones, splash zones, hazardous food processing areas, high and low ambient areas, and hose-down zones.

**NSF** (National Sanitation Foundation) approved for "Food Handling" areas, typically requiring non-glass lighting.

**ABS** (American Bureau of Shipping) type approval for use on decks, vessels, platforms, barges, ships and boats. Also suitable for docks and marinas.

##### Compliances

- UL-8750 for LED lighting
- ANSI/UL 1598(A)
- UL-844 Standard for lighting fixtures for hazardous locations, Class I, Division 2; Class II, Divisions 1 and 2; Class III
- CSA C22.2 no. 137-M1981 electric luminaires for use in hazardous locations
- Enclosed and gasketed
- Type 3, 4X
- IP66/IP67

Supplemental **20KA/10KV Surge Protection** is **standard** (for 120-277 VAC models)  
**10KA/10KV Surge Protection** (for 347-480 VAC)

##### Materials

- Housing – one piece clear anodized  $\leq$  .1% copper-free aluminum extrusion
- Endcaps & wiring – Access covers are copper-free ( $\leq$  .4%) aluminum with natural finish.
- External screws are 316 stainless steel
- Lens – Impact resistant polycarbonate lens available in diffuse or clear

##### LALFP & LALFPxiE Product Features

- LALFPxiE models have "built-in" battery backup for 90 or 180 minute battery backup
- Shallow design minimizes profile in work areas with low ceiling heights
- Diffuse Lens Standard to minimize glare; Clear Lens available
- Polycarbonate Single Lens L1 & L3; Double Lens model L5
- Variety of mounting options including swivel brackets, wall, ceiling brackets, or beam clamps
- End Caps each have 2 mounting feet built-in plus a safety strap attachment point
- Standard unit End Caps each have single a 3/4" NPT hub, and fixture is furnished with one 3/4" close-up plug and two 3/4" to 1/2" reducers – provides out of the box 1/2" dead-end to 3/4" feed-through flexibility. Metric openings are available.
- Standard LALFPs have one wiring Access Plate for easy access to terminal block.

**Class I, Div. 2, Groups A, B, C, D**  
**Class I, Zone 2, Groups IIC, IIB, IIA**  
**Class II, Div. 1 & 2, Groups E, F, G**  
**AEx nAll, Ex nAll**

**Wet Locations**  
**Type 4X**  
**IP66/IP67**

**Marine Rated (US only)**  
**ABS Type Approval**  
**NSF Food Handling**

Certified - File LR11713

**IECEx Rated**  
**Zone 2 and Zone 21 areas**  
**Ex nA IIC T6 to T3, Gc**  
**Ex tb IIC T95°C Db**  
**Tamb -50°C < Tz < +65°C, IP66**

**IECEx Certificate**  
**QPS 15.0010**

**ATEX Certificate**  
**CML 15ATEX4081X (nA)**  
**&**  
**CML15ATEX3082X (tb)**

##### Electronics Includes:

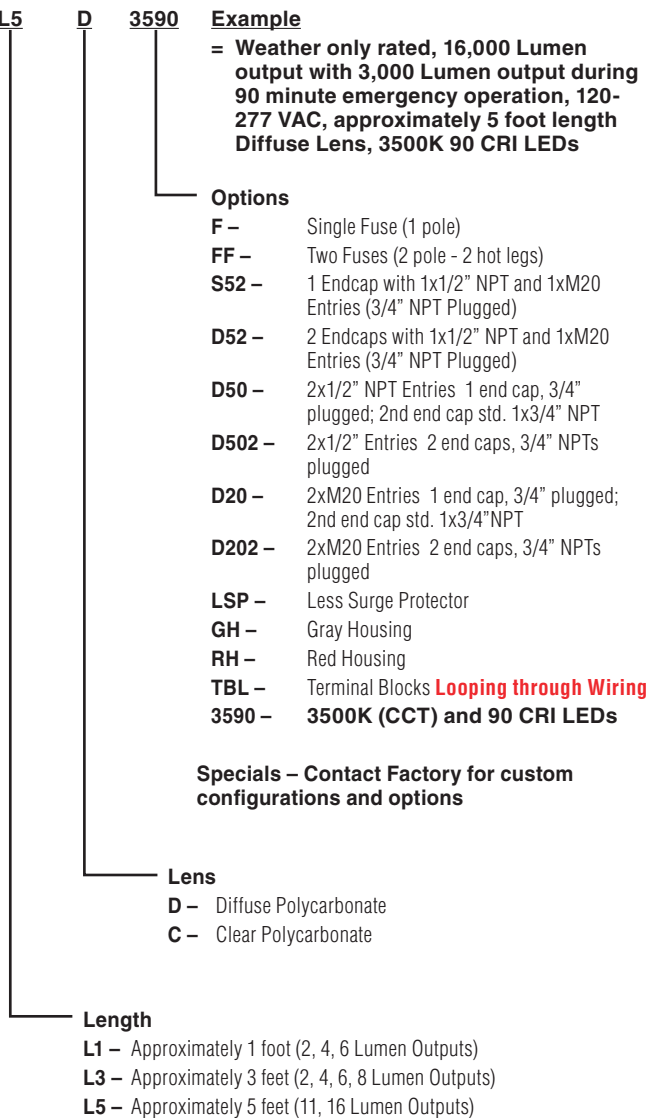
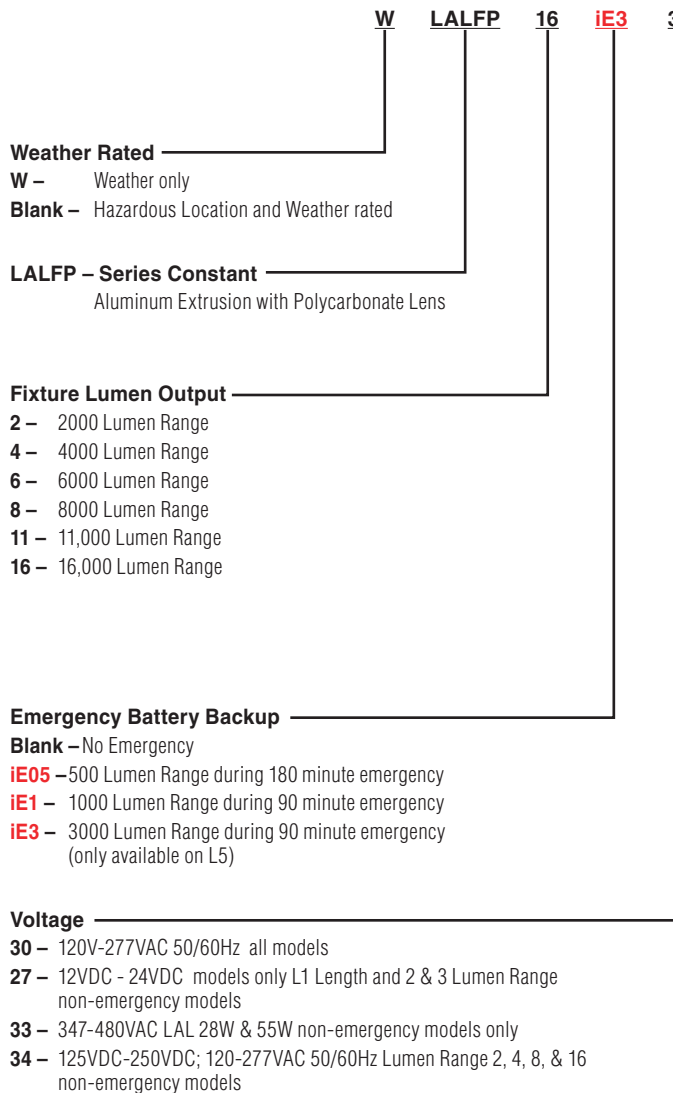
- Self-diagnostics monitors LED status, LED driver circuit, battery capacity and charger function and displays any fault detection by means of a flashing code
- Self-Test feature automatically runs a 1 minute test once a month and an alternating 30-60 minute test once every 6 months. LED indicator provides visible fault detection and charging status
- User initiated 1, or 90-minute system test feature
- 15 minute re-transfer delay
- Automatic unit transfer in brown-out conditions (below 80% of nominal AC input voltage)

##### LED Features and Standards

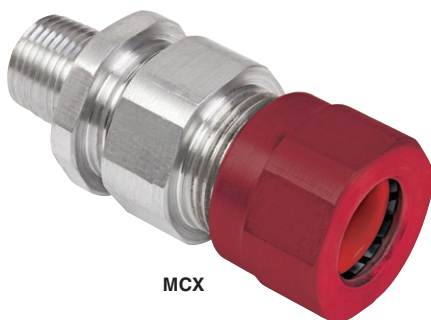
- Many Midpower LEDs blend light to simulate fluorescent tubes
- Chromaticity outputs:  
 standard – 5000K 70 CRI  
**3590 option – 3500K 90 CRI**
- LED Array Life – 100,000+ hours with 70% initial lumens
- Long Fixture Life – 50,000 - 55,000 maintenance free hours
- Ambient suitability -40°C to 65°C (see tables). -20°C to 50°C Ambient suitability for Emergency models.
- Instant On – Including after power interruption
- World Voltage 120 - 277VAC 50/60Hz
- Solder-LESS LED Board Connections – Vibration Resistant



## CATALOG LOGIC



## CABLE GLAND ORDERING OPTIONS



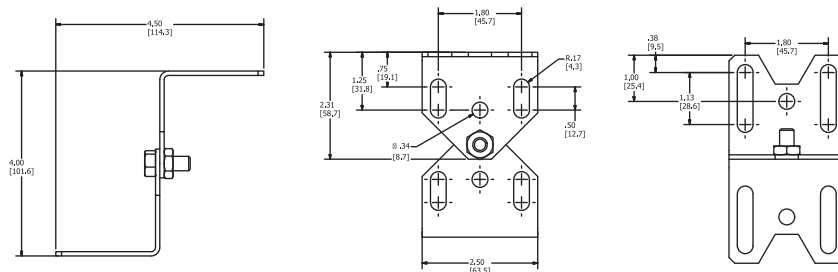
CATALOG NUMBER	ENTRY THREAD SIZE (NPT)	CABLE ACCEPTANCE DETAILS	
		DIAMETER 'C'	
		MIN.	MAX.
MCX1B	1/2"	0.51" (13.0)	0.63" (16.0)
MCX1C	1/2"	0.60" (15.2)	0.82" (20.8)
MCX2	3/4"	0.73" (18.5)	1.03" (26.2)

For entire series, please see page 32.



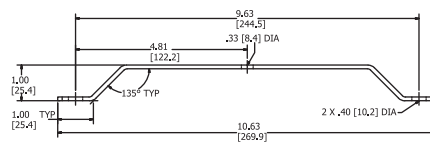
### ACCESSORIES AND REPLACEMENT PARTS

ACCESSORIES AND REPLACEMENT PARTS	
LAL-SB	Swivel Bracket Set w/ Adjustable Height; includes 5/16" bolts/nuts/lock-washers for attachment to LAL(C) "slots"; can also be attached to end cap mounting feet with FBO bolts.
LZCB	Ceiling Bracket Set with Stainless Steel Bolts
LZWB	Wall Bracket Set with Stainless Steel Bol
LAL-BC	Steel/malleable Iron with Zinc electroplate for corrosion resistance; includes Stainless Steel Bolts to attach to LAL(C) "slots"
LAL-EB	Eyebolt Set with Stainless Steel Bolts
VMSC10	10' Stainless Steel Safety Cable with loop grip
LALG	Stainless Guard for 1 LAL Lens, order two for 2 lens models
LALCG	LALC Stainless Guard
LAL-LENSCLR	Single Clear Lens with Gasket for L3 & L5 Lengths
LAL-LENSDIF	Single Diffuse Lens with Gasket for L3 & L5 Lengths
LALC-LENSCLR	Single Clear Lens with Gasket for L1 Length
LALC-LENSDIF	Single Diffuse Lens with Gasket for L1 Length

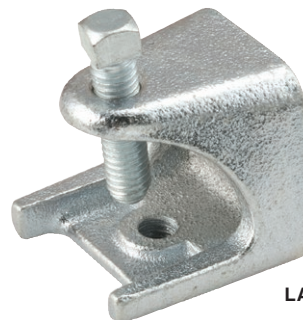


LAL-SB Dimensions – extended shown

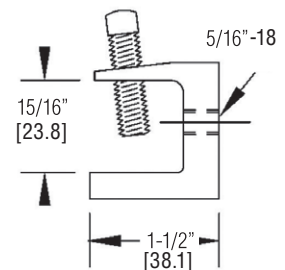
#### Ceiling Bracket Set Part Number LZCB Stainless Steel (natural finish)



VMSC10 Safety Cable



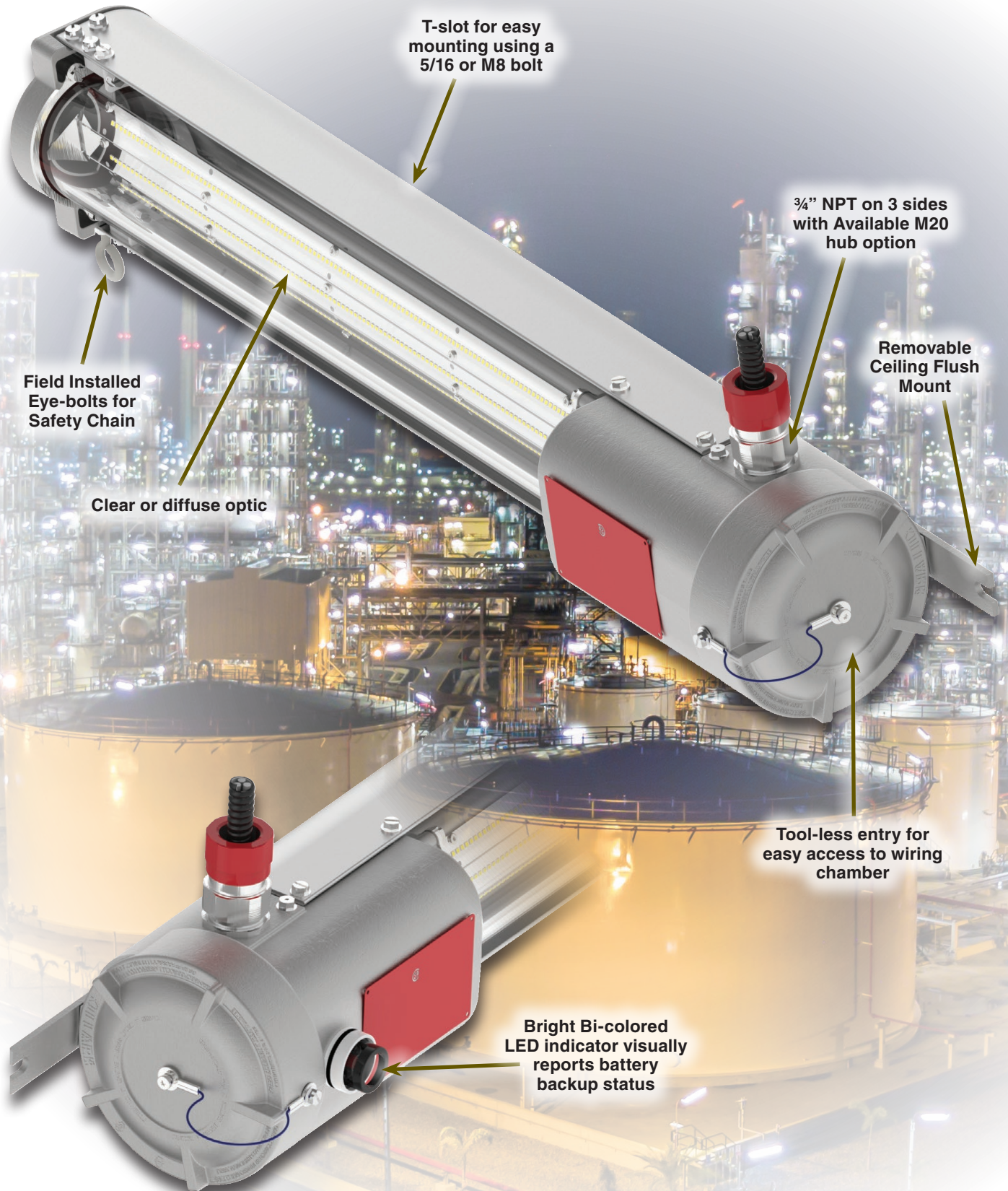
LAL-BC Beam Clamp





L1L SERIES

# KILLARK



T-slot for easy mounting using a 5/16 or M8 bolt

3/4" NPT on 3 sides with Available M20 hub option

Removable Ceiling Flush Mount

Field Installed Eye-bolts for Safety Chain

Clear or diffuse optic

Tool-less entry for easy access to wiring chamber

Bright Bi-colored LED indicator visually reports battery backup status



### LED FIXTURES



Class I, Div. 1 & 2, Groups B, C, D  
 Class I, Zones 1 & 2, Groups IIB, IIA  
 Class II, Div. 1 & 2, Groups E, F, G  
 Class III, Div. 1 & 2  
 IP66  
 Suitable for wet locations  
 Suitable for paint spray booths



### FEATURES-SPECIFICATIONS

## LINEAR<sup>LITE</sup>® \*

\* marca registrada MEXICO

#### Applications

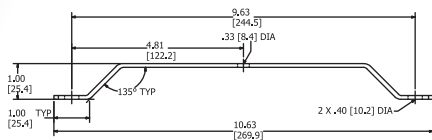
- Paint Spray Booths
- Chemical Facilities
- Waste Water Facilities
- Pipeline Pump Stations
- Ammunition Facilities
- Paint Manufacturing Plants
- Oil & Gas Refineries
- Fuel Transfer Facilities

#### LED Features

- Industry-Leading efficacy
- Corrosion resistant copper-free housing
- Standard 5000K CCT @ 70 CRI minimum
- **Option 3500K CCT @ 90 CRI minimum**
- 20kV / 10kA surge protection on standard fixture
- T-slot mounting for the ultimate in easy mounting
- Self-testing and self-diagnostics on battery backup fixtures
- Angled LED boards for wider mounting distances
- Terminal blocks standard
- Low Profile
- Tool-less access to wiring chamber
- Diffuser option available
- 5 year fixture warranty

#### Ceiling Bracket Set

Part Number LZCB  
 Stainless Steel (natural finish)

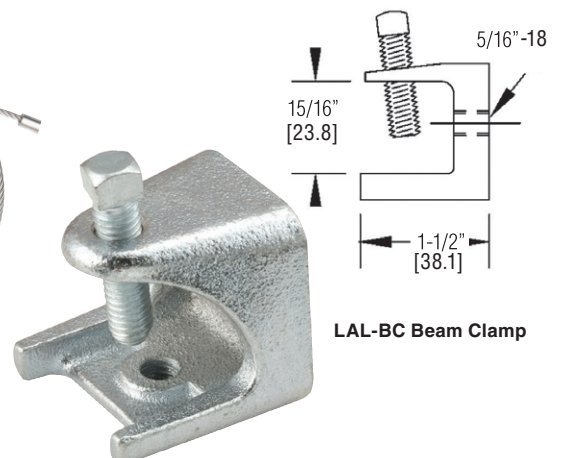


L1L-GUARD

### ACCESSORIES



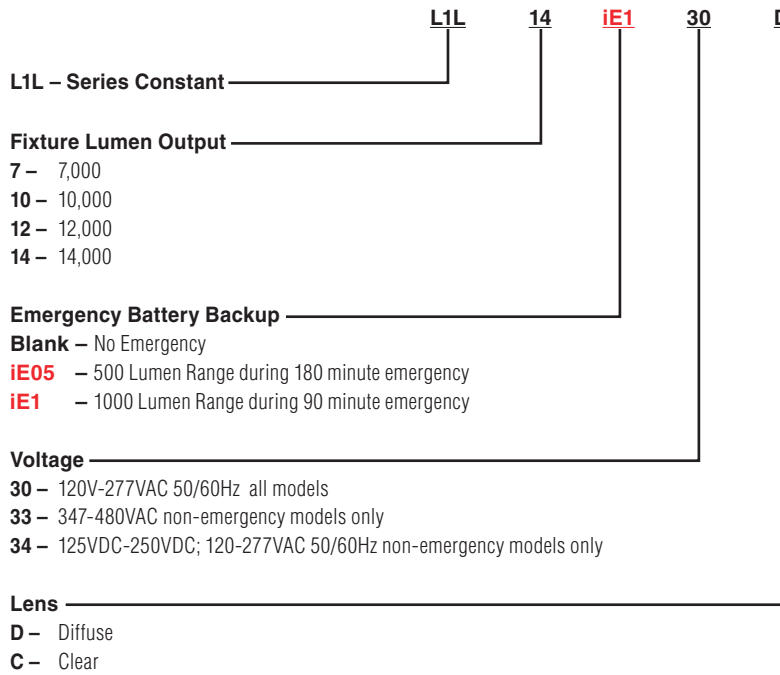
VMSC10 Safety Cable



LAL-BC Beam Clamp



## CATALOG LOGIC



**Example**

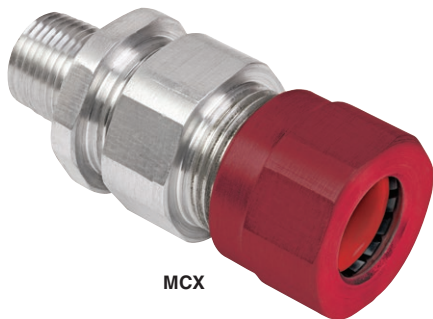
= L1L 14,000 lumen output with 1,000 lumen output during 90 minute emergency operation, 120-277VAC, Diffuse Lens, 3500K 90 CRI LEDs

**Options**

- F – Single Fuse (1 pole)
- FF – Two Fuses (2 pole - 2 hot legs)
- LSP – Less Surge Protector
- GH – Gray Housing
- RH – Red Housing
- WH – White Housing
- TBL – Terminal Blocks **Looping through Wiring**
- YH – Yellow Housing
- 3590 – 3500k LED @ 90 CRI**
- D20 – 3 M20 entries
- D25 – 3 M25 entries

**Specials – Contact Factory for custom configurations and options**

## CABLE GLAND ORDERING OPTIONS



CATALOG NUMBER	ENTRY THREAD SIZE (NPT)	BEND TYPE	CABLE ACCEPTANCE DETAILS		MAX LENGTH
			MIN	MAX	
MCX1B	1/2"	Straight	0.51" (13.0)	0.63" (16.0)	2.10" (53.3)
MCX1C	1/2"		0.60" (15.2)	0.82" (20.8)	2.40" (61.0)
MCX2	3/4"		0.73" (18.5)	1.03" (26.2)	2.60" (66.0)
MCX14C	1/2"	45°	0.60" (15.2)	0.82" (20.8)	3.25" (82.6)
MCX24	3/4"		0.73" (18.5)	1.03" (26.2)	3.43" (87.1)
MCX19C	1/2"	90°	0.60" (15.2)	0.82" (20.8)	2.51" (63.8)
MCX29	3/4"		0.73" (18.5)	1.03" (26.2)	2.61" (66.3)

For entire series, please see page 32.

# LIGHTING

LOWBAY & HIGHBAY LIGHTING



**KILLARK®**

SEE [WWW.HUBBELL-KILLARK.COM](http://WWW.HUBBELL-KILLARK.COM) LIGHTING SOFTWARE FOR LATEST LED PHOTOMETRY





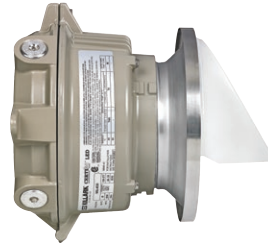
## COMPACT SIZE – INTRODUCTION & LOGIC



**Luminaire w/Glass Refractor and Guard**



**Luminaire w/Flat Lens**



**Wall Mount w/VZRF8PR Pathway Reflector**

**Class I, Div. 2, Groups A,B,C,D**  
**Class I, Zone 2, Groups IIC,IIB,IIA**  
**Class II, Div. 1 & 2, Groups E,F,G**  
**Class III**  
**Suitable for wet locations**  
**Marine Rated (US only)**  
**Type 3, 4X**

Certified - File LR11713

## CERTILITE® LED

### FEATURES-SPECIFICATIONS Applications

CERTILITE® MBL LED fixtures are designed for installations where moisture, dirt, dust, corrosion and vibration may be present, or Type 3 and 4X areas where wind, water, snow or high ambients can be expected. They can be used in locations made hazardous by the presence of flammable vapors or gases or combustible dusts as defined by the NEC/CEC.

Typical applications can low ceiling areas in manufacturing plants, and certain chemical and petrochemical processing facilities, sewage treatment plants, off-shore and dockside installations, garages and storage facilities.

### Compliances

- UL-8750 for LED lighting; UL 1598A
- UL Marine type lighting fixtures
- UL-844 Standard for lighting fixtures for hazardous locations, Class I, Division 2; Class II, Divisions 1 and 2; Class III
- CSA C22.2 no. 137-M1981 electric luminaires for use in hazardous locations
- Enclosed and gasketed
- Type 3, 4X

### Materials

- Housing, splice box and guards (MBAG, VMAG) corrosion resistant copper-free aluminum alloy
- Baked powder epoxy/polyester finish, electrostatically applied for complete, uniform corrosion protection
- All external hardware - stainless steel
- Reflectors - Polyester reinforced fiberglass

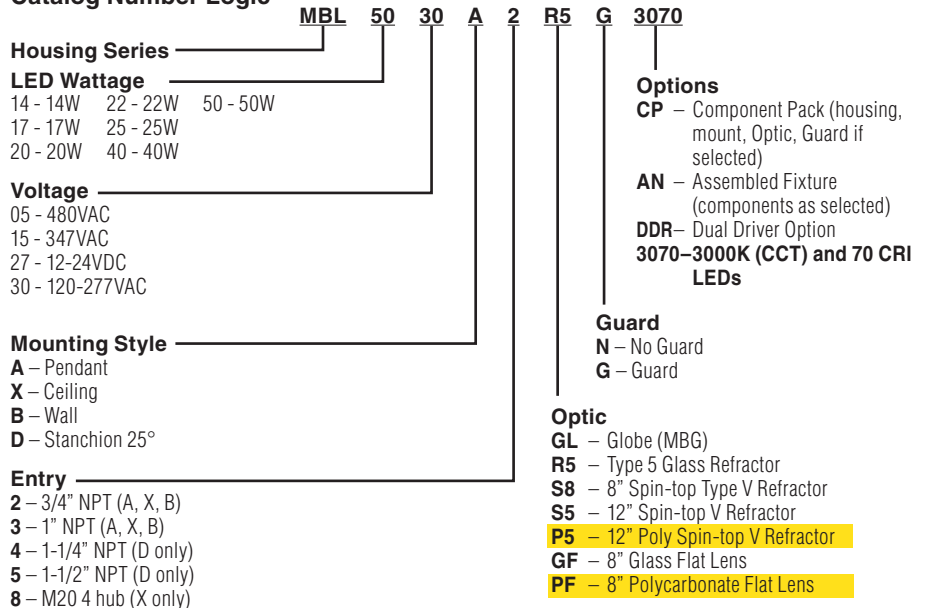
### LED Luminaire Features and Standards

Supplemental **20KA/10KV Surge Protection** is **standard** (for 120-277 VAC models)  
**10KA/10KV Surge Protection** (for 347-480 VAC)

- Compact in Size with Traditional Industrial Appearance and Suitability
- Wide variety of optics including globes, globes with reflectors, all-glass refractors, and spin-top refractors
- Optional Mounting arrangements including Pendant, Wall, Ceiling, and Stanchion
- MBL LED Housings can be retrofitted to existing MB splice boxes; upgrade from Fluorescent or HID
- **Warm LED color option available with 3070 option**

- Energy Savings – Less than 50 Watts of Power
- LED Array Life – 100,000+ hours with 70% initial lumens
- Long Fixture Life – 50,000 - 55,000 maintenance free hours
- Crisp White Light for Excellent Color Rendering - Chromaticity 5000°K (CCT); 70 CRI
- Ambient suitability -40°C to 40°C (to 55°C for 14W to 22W)
- Instant on – Including after power interruption
- “World Voltage” 120-277VAC 50/60Hz
- Solder-LESS LED Board Connections – Vibration Resistant

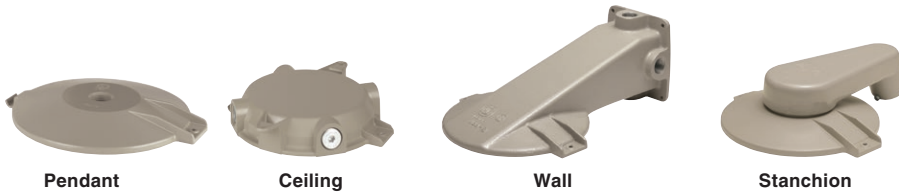
### Catalog Number Logic







## COMPACT SIZE – COMPONENTS



Pendant

Ceiling

Wall

Stanchion

MB MOUNTING BRACKETS				
CATALOG NUMBER				HUB SIZE
PENDANT	CEILING	WALL	STANCHION	
MBA-2	MBX-2	MBB-2	—	3/4"
MBA-3	MBX-3	MBB-3	—	1"
—	MBX-8	—	—	M20
—	—	—	MBD-4	1-1/4"
—	—	—	MBD-5	1-1/2"



### Non-Glass Polycarbonate 8" Flat Lens or Spin-top



Patented Design

MBL LED OPTICS AND ACCESSORIES		
DESCRIPTION	OPTIC LOGIC	GUARD
Globe (glass)	MBG (GL)	MBAG
Reflector (all glass) Type V	VMR175 (R5)	VMAG17
Reflector (spin top) 8" Type V	VZRG1550 (S8)	VMRWG8
Reflector (spin top) 12" Type V	VZRG2550 (S5)	VMRWGS
8" Spin-top flat lens (glass) 14-24W	VZRGF8 (GF)	VZRF8GRD
8" Spin-top flat lens (polycarbonate) 14-24W	VZRPF8 (PF)	VZRF8GRD
Reflector polycarbonate (spin -top) 12" Type V	VZRP175 (P5)	VMRWGS
Pathway Reflector 14-24W	VZRF8PR	NA
Reflector for MBG Globe - DOME	VMPSD-17	NA
Reflector for MBG Globe - ANGLE	VMPA-17	NA
120VAC Photocell with FS Style Cover	VMFSPC1	NA
208-277VAC Photocell with FS Style Cover	VMFSPC2	NA
3-sided EXIT Accessory (use without guard)	VEXA100B	NA



## REDUCED PROFILE – INTRODUCTION



Class I, Div. 2, Groups A,B,C,D  
 Class I, Zone 2, Groups IIC, IIB, IIA  
 Class II, Div. 1 & 2, Groups E,F,G  
 Class III  
 Suitable for wet locations  
 Marine Rated (US only)  
 Type 3, 4X

Certified - File LR11713

## CERTILite<sup>®</sup>V LED

### FEATURES-SPECIFICATIONS

#### Applications

CertiLite<sup>®</sup>V VM1L LED fixtures are designed for installations where moisture, dirt, dust, corrosion and vibration may be present, or Type 3 and 4X areas where wind, water, snow, or high ambients can be expected. They can be used in locations made hazardous by the presence of flammable vapors or gases or combustible dusts as defined by the NEC.

Typical applications include manufacturing plants, and certain chemical and petrochemical processing facilities, sewage treatment plants, off-shore and dockside installations, garages and storage facilities.

#### Compliances

- UL-8750 for LED lighting
- UL-844 Standard for lighting fixtures for hazardous locations, Class I, Division 2; Class II, Divisions 1 and 2; Class III
- CSA C22.2 no. 137-M1981 electric luminaries for use in hazardous locations
- Enclosed and gasketed
- Type 3, 4X

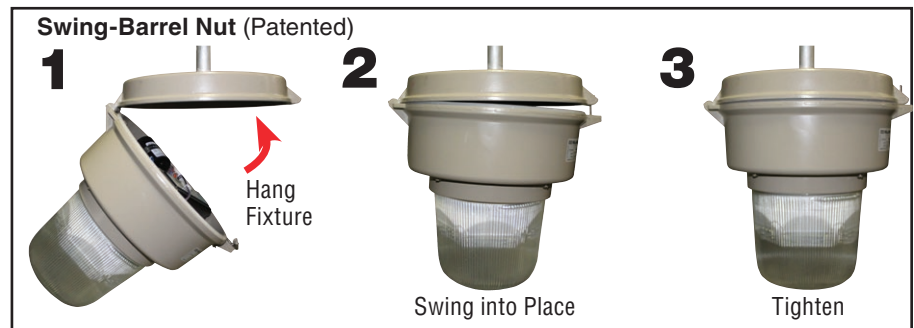
#### Materials

- Housing, splice box and cast guards corrosion resistant copper-free aluminum alloy
- Baked powder epoxy/polyester finish, electrostatically applied for complete, uniform corrosion protection
- All external hardware - stainless steel
- Reflectors - Polyester reinforced fiberglass

#### LED Luminaire Features and Standards

Supplemental **20KA/10KV Surge Protection** is **standard** (for 120-277 VAC models)  
**10KA/10KV Surge Protection** (for 347-480 VAC)

- Reduced profile with Traditional Industrial Appearance and Suitability
- Wide variety of optics including globes, globes with reflectors, all-glass refractors, and spin-top refractors
- Swing-Barrel Nut patented tank mounting system
- Optional Mounting arrangements including Pendant, Wall, Ceiling, Stanchion and others
- VM1L LED Housings can be retrofitted to existing VM splice boxes; upgrade from HID sources
- Energy Savings – less than 55 Watts of Power
- LED Array Life – 100,000+ hours with 70% initial lumens
- Long Fixture Life – 50,000 - 55,000 maintenance free hours
- Crisp White Light for Excellent Color Rendering – Chromaticity 5000°K (CCT); 70 CRI
- Ambient suitability -40°C to 55°C
- Instant on – including after power interruption
- “World Voltage” 120-277VAC 50/60Hz
- Solder-LESS LED Board Connections – Vibration Resistant
- Dual Driver Option (DDR) – For additional energy savings, half of the fixture can be turned off
- **Warm LED color option available with 3070 option**



Polycarbonate 12"  
Spin-top  
Refractor VZRG2550



**Photo controls – Class I Div. 2 / N4X areas**  
 Available as Field or Factory Installed to save energy when light not required.



**Earthquake Tab –**  
 Built-in attachment point for safety cables.

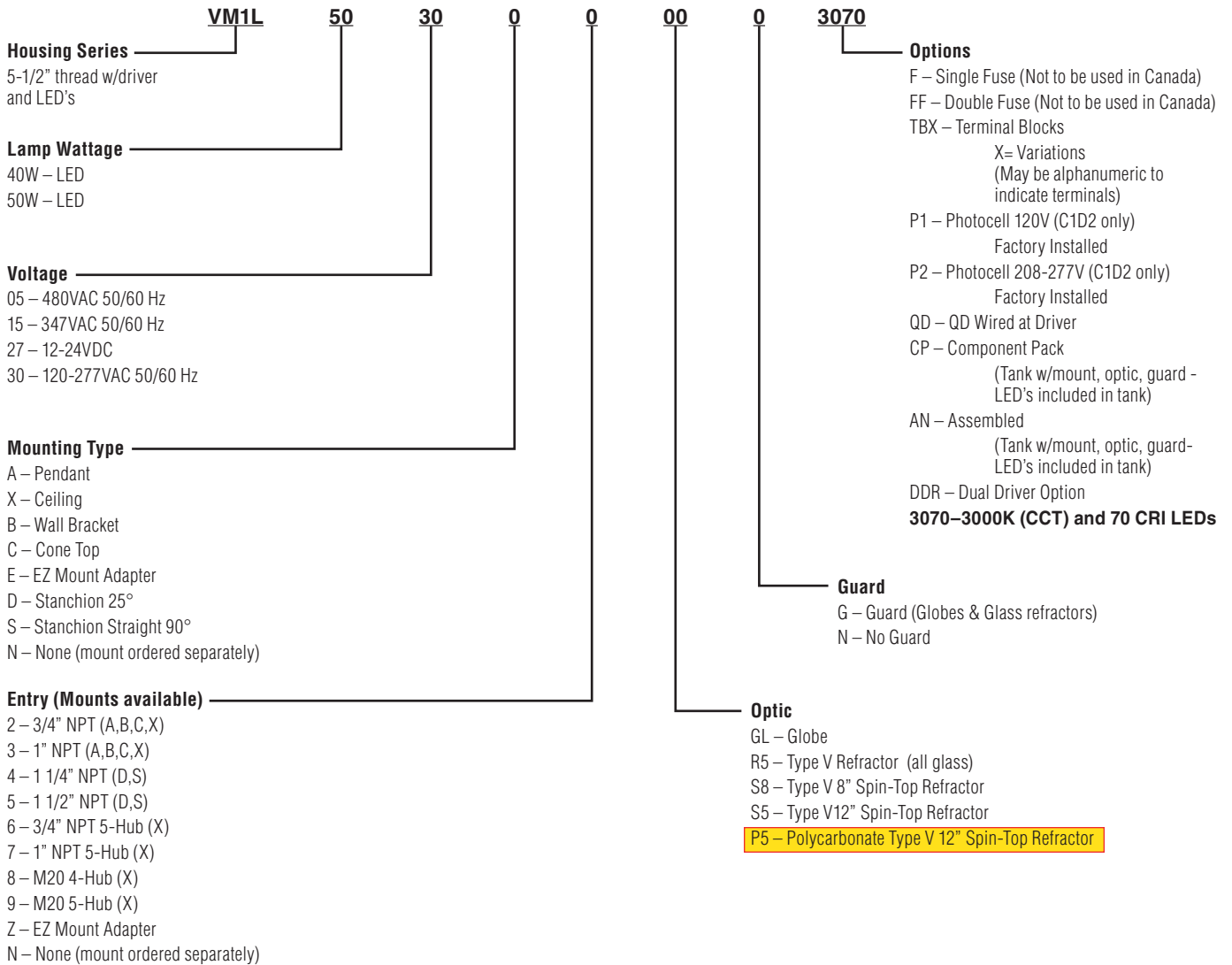
**Safety: Secures fixture to structure in case of conduit failure.**



REDUCED PROFILE – CATALOG LOGIC

## CERTILITE<sup>®</sup>V LED

### CertiLite<sup>®</sup>V LED Catalog Number Logic

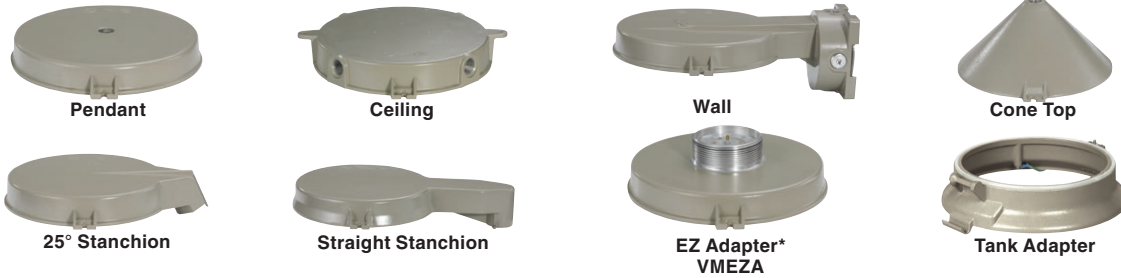




# VM1L SERIES

# KILLARK

## REDUCED PROFILE – COMPONENTS



CERTILITE® VM MOUNTING SPLICE BOXES							
HUB SIZE	CATALOG NUMBER						
	PENDANT	CEILING 4 HUB	CEILING 5 HUB	WALL	CONE TOP	25 DEGREE STANCHION	90 DEGREE STANCHION
3/4"	VMA2B	VMX2B	VMX6B	VMB2B	VMC2B	—	—
1"	VMA3B	VMX3B	VMX7B	VMB3B	VMC3B	—	—
1-1/4"	—	—	—	—	—	VMD4B	VMS4B
1-1/2"	—	—	—	—	—	VMD5B	VMS5B
M-20	—	VMX8B**	VMX9B**	VMB8B**	—	—	—

\* VMEZA is used between a driver tank and an EZ mount-ordered separately.

\*\* Furnished with non-metallic plugs. Also available: VMB10B wall 4xM25 hubs, and VMB810B 2xM20 side hubs and 2xM25 top/bottom

VM1L LED OPTICS AND ACCESSORIES		
DESCRIPTION	OPTIC LOGIC	GUARD
Globe (glass)	VMG17 (GL)	VMAG17
Refractor (all glass) Type V	VMR175 (R5)	VMAG17
Refractor (spin top) 8" Type V	VZRG1550 (S8)	VMRWG8
Refractor (spin top) 12" Type V	VZRG2550 (S5)	VMRWGS
Refractor polycarbonate (spin-top) 12" Type V	VZRP175 (P5)	VMRWGS
DOME REFLECTOR (Polyester reinforced fiberglass)	VMPSD40	NA
ANGLE REFLECTOR (Polyester reinforced fiberglass)	VMPA40	NA
120VAC Photocell with FS Style Cover	VMFSPC1	NA
208-277VAC Photocell with FS Style Cover	VMFSPC2	NA
3-sided EXIT Accessory (use without guard)	VEXA100B	NA
Tank adapter to Crouse-Hinds® VM Series mounts*	VMCHVM	NA

OPTICS



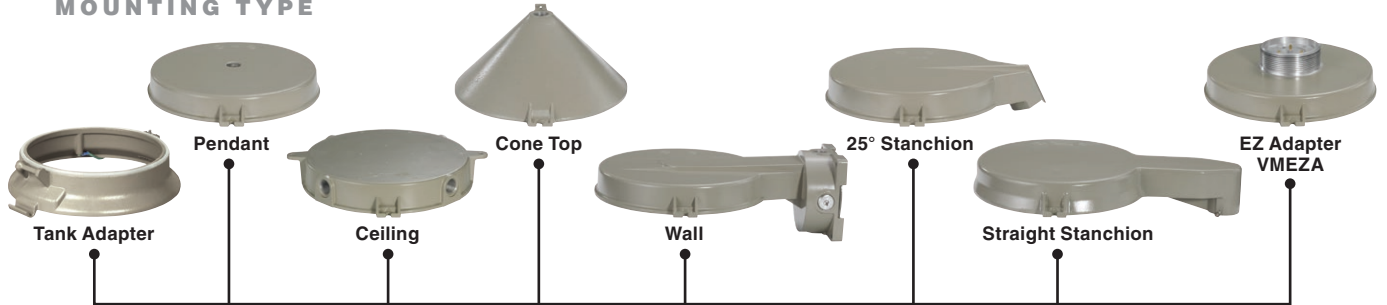
ACCESSORIES



TYPICAL WEIGHTS (LBS.) W/ STANDARD GLOBE AND GUARD - VM1L SERIES			
Pendant 23.00	Ceiling 24.10	Wall 27.50	Stanchion 23.90

### HOUSING FIXTURE ASSEMBLY GUIDE

#### MOUNTING TYPE



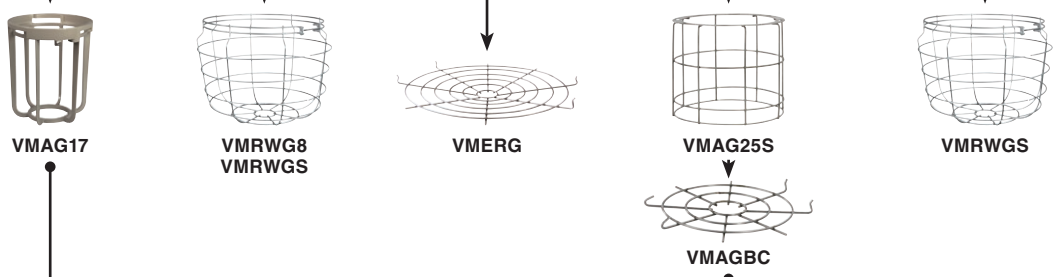
#### TANK



#### OPTIC



#### GUARD



#### REFLECTOR





## VM2&4LB, VM2&4LC SERIES

# KILLARK

### HIGH WATTAGE – INTRODUCTION



VM2LB with Globe/  
Guard



VM4LB with Globe/  
Guard



VM4LC with Flat Lens



Class I, Div. 2, Groups A,B,C,D  
Class I, Zone 2, Groups IIC, IIB, IIA  
Class II, Div. 1 & 2, Groups E,F,G  
Class III

Suitable for wet locations  
Type 3, 4X  
IP66

Marine Rated (US only)

CSA US Certified - File LR11713

IECEX Rated Models (VM4L with IEx  
suffix)

Ex nA IIC T4, Gc / Ex tb IIC T83°C Db  
Tamp -40°C ≤Ta≤+65°C, IP66

IECEX Certificate  
QPS 15.0006

INMETRO Certificate  
IEx 16.0137

ATEX Certificate  
CML 15ATEX4101X(nA)  
&  
CML 15ATEX3102X(tb)

Contact Factory for other certification details



Consult website  
for current list of  
approved luminaires

- Instant On – Including after power interruption
- World Voltage 120 – 277VAC 50/60Hz
- Solder-LESS LED Board Connections – Vibration Resistant
- Dual Driver Option (DDR) – For additional energy savings, half of the fixture can be turned off.
- Two LED internal heat sink styles
  - » Bulb VM2LB/VM4LB
  - » Concave VM2LC/VM4LC

## CERTILITE V LED

### FEATURES-SPECIFICATIONS

#### Applications

CERTILITE® V VM4L LED fixtures are designed for installations where moisture, dirt, dust, corrosion and vibration may be present, or Type 3 and 4X areas where wind, water, snow or high ambients can be expected. They can be used in locations made hazardous by the presence of flammable vapors or gases or combustible dusts as defined by the NEC/CEC/IECEX/ATEX & INMETRO.

Typical applications include manufacturing plants, food processing, certain chemical and petrochemical processing facilities, sewage treatment plants, off-shore and dockside installations, garages and storage facilities.

#### Compliances

- UL-8750 for LED lighting
- UL-844 Standard for lighting fixtures for hazardous locations, Class I, Division 2; Class II, Divisions 1 and 2; Class III
- CSA C22.2 no. 137-M1981 electric luminaires for use in hazardous locations
- Enclosed and gasketed
- Type 3, 4X
- IP66 & Marine
- Self-testing per NFPA 101® Life Safety Code

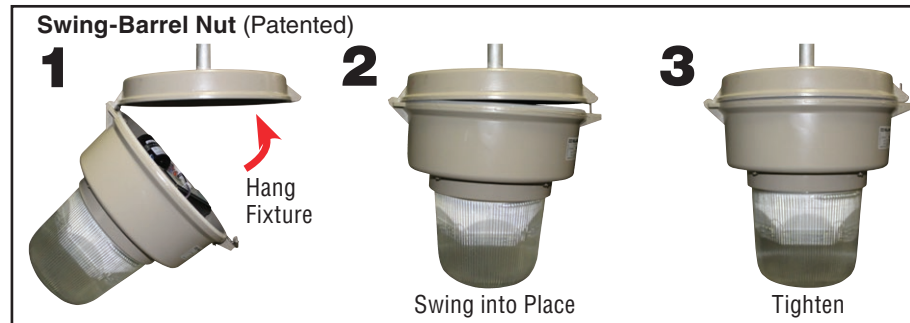
#### Materials

- Housing, splice box and cast guards corrosion resistant copper-free aluminum alloy
- Baked powder epoxy/polyester finish, electrostatically applied for complete, uniform corrosion protection
- All external hardware – stainless steel
- Reflectors – Polyester reinforced fiber glass or aluminum

#### LED Luminaire Features and Standards

Supplemental **20KA/10KV Surge Protection** is **standard** (for 120-277 VAC models)  
**10KA/10KV Surge Protection** (for 347-480 VAC)

- Traditional Industrial Appearance, Suitability, and Photometric Performance
- Wide variety of optics including globes, globes with reflectors, all-glass refractors, spin-top refractors and flat lens
- Swing-Barrel Nut patented tank mounting system
- Optional Mounting arrangements including Pendant, Wall, Ceiling, Stanchion and others
- VM4L LED Housings can be retrofitted to existing VM splice boxes; upgrade from HID sources
- **VM2Lx housing is 1.56" shallower for low ceilings**
- Crisp White Light for Excellent Color Rendering – Chromaticity 5000 K (CCT range); approx. 70 CRI
- Energy Savings – less than 130 Watts of Power
- LED Array Life – 100,000+ hours with 70% initial lumens
- Long Fixture Life – 50,000 - 55,000 maintenance free hours
- Ambient suitability -40°C to 65°C (see tables). **-20°C to 50°C Ambient suitability for Emergency models.**
- **Warm LED color option available with 3070**





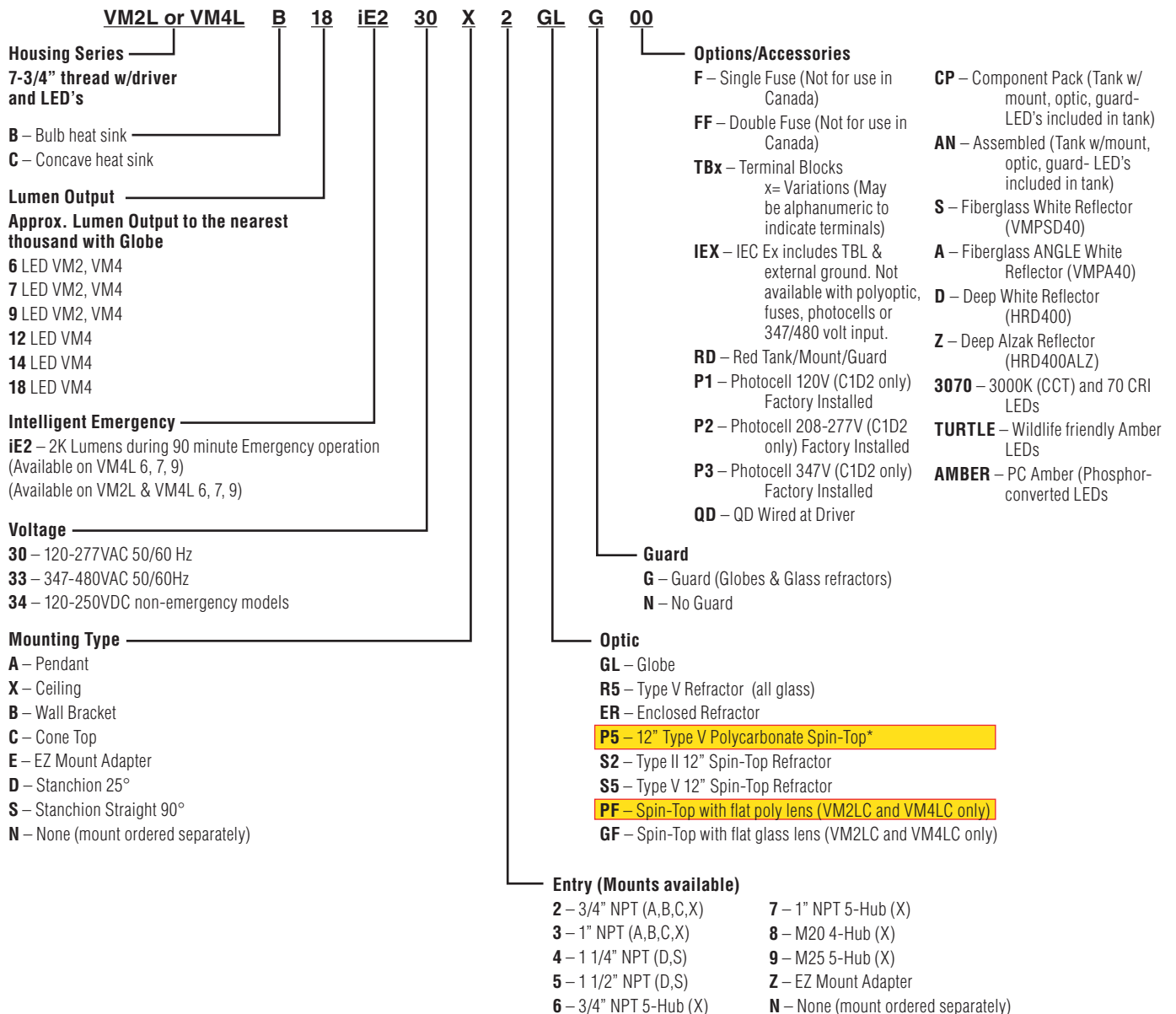
### HIGH WATTAGE – CATALOG LOGIC

# CERTILITE<sup>®</sup>V LED

**Killark high efficiency LED Luminaries require NO external heat sink which adds weight and collects dust and other contaminants**



## CertiLite<sup>®</sup>V LED Catalog Number Logic



\*Non-glass Group G Food Processing Suitability



## VM2&4LB, VM2&4LC SERIES

# KILLARK

### HIGH WATTAGE – COMPONENTS & RATINGS



**“EZ” Mount Adapter**  
For easy fixture relocation  
or to repair fixture on  
'bench top'.



VMEZA adapter is used  
between a driver tank and  
EZ mount ordered  
separately.



Pendant



Ceiling



Wall Bracket



25° Stanchion

MOUNTING BOXES				
CATALOG NUMBER				HUB SIZE
PENDANT	CEILING	BRACKET	STANCHION	
EZA2	EZX2	EZB3	—	3/4"
EZA3	EZX3	EZB3	—	1"
—	—	—	EZD4A	1-1/4" / 1/2"*

\*1-1/2" furnished with 1-1/2"-1-1/4" reducer and extension.

#### Competitive Adapters

Designed to ease upgrading of other manufacturer's fixtures to KILLARK LEDs where removal of existing mounting screws and conduit would be difficult and time consuming.

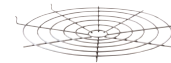
VM2L/VM4L LED OPTICS AND ACCESSORIES		
DESCRIPTION	OPTIC LOGIC	GUARD
Flat Lens (glass spin top) "C" tank only	VZRGF12 (GF)	VZRF12GRD
Flat Lens (polycarbonate spin top) "C" tank only	VZRPF12 (PF)	VZRF12GRD
Globe (glass)	VMG25 (GL)	VMAG25S
Reflector (all glass) Type V	VMR255 (R5)	VMAG25S
Enclosed Reflector	VMER40 (ER)	VMERG
Reflector (polycarbonate spin top) 12" Type V	VZRP175B (P5)	VMRWGS
Reflector (glass spin top) 12" Type V	VZRG4050 (S5)	VMRWGS



VMAG25S



VMRWGS



VMERG



VMAGBC



VMPSD40  
Standard Dome, Fiberglass  
White Reflector, Dia: 16"



VMPA40  
30° Angle, Fiberglass  
White Reflector, Dia:16"



HRD400  
Deep Aluminum, White  
Reflector, Dia: 21"



HRD400ALZ  
Deep Aluminum, Anodized  
Reflector, Dia: 21"

VM2L/VM4L LED REFLECTORS AND ACCESSORIES	
DOME REFLECTOR (Polyester reinforced fiberglass)	VMPSD40
ANGLE REFLECTOR (Polyester reinforced fiberglass)	VMPA40
DEEP DOME REFLECTOR (White Painted Aluminum)	HRD400
DEEP DOME REFLECTOR (Anodized Aluminum)	HRD400ALZ
120VAC Photocell with FS Style Cover	VMFSPC1
208-277VAC Photocell with FS Style Cover	VMFSPC2
Bottom Closure for VMAG25S	VMAGBC
4-sided EXIT Accessory (use without guard)	VEXA400



VEXA400  
Fixture not included



VMFSPC





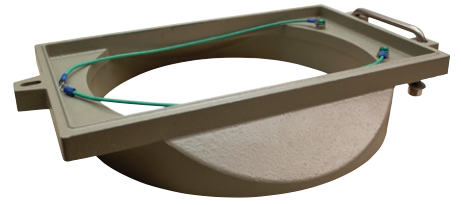
### FIXTURE ADAPTERS



VMCHVM-DEEP



VMCHVM



VMGEH2

## CERTiTE V LED

### FEATURES-SPECIFICATIONS

#### Applications

The Killark VM adapters are designed to ease upgrading of other manufacturer's fixtures to KILLARK LEDs where removal of existing mounting screws and conduit would be difficult and time consuming.

Adapters are used with the Killark Fixture Housing, Globe, guard (if applicable) and the competitive fixture splicebox. The Killark fixtures when used with the Killark adapters and appropriate competitive adapter.

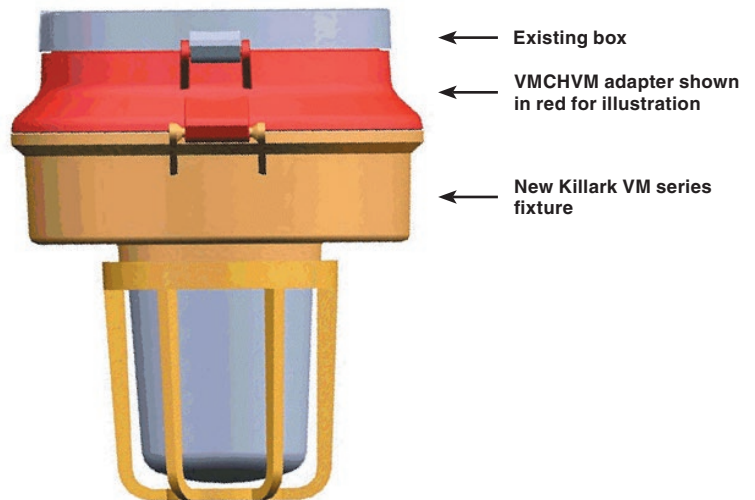
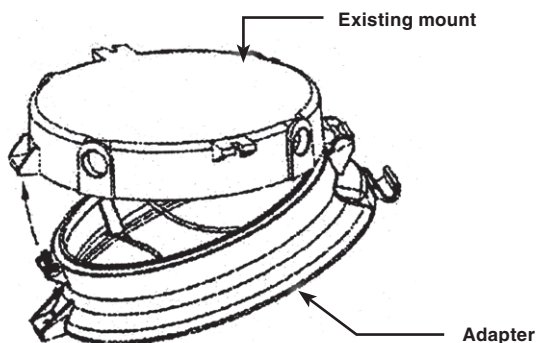
#### Features

- Fixture and competitive mount are certified together
- Baked powder epoxy/polyester finish, electrostatically applied to match the Killark VM tank
- All external hardware – Stainless Steel

Class I, Div. 2, Groups A, B, C, D  
Class II, Div. 1, Groups E, F, G  
Class III  
Type 4X



VM SERIES COMPETATIVE ADAPTERS		
CATALOG NUMBER	DESCRIPTION	EXAMPLE OF MODEL UTILIZED OR REPLACED
VMCHVM	Tank adapter to Crouse-Hinds® VM Series mounts	VMV S2 C 050 R5
VMCHVM-DEEP	Tank adapter to CH (70's era wall mount with deep box)	VMV S2 TW 050 R5
VMM2LP	Tank adapter to Appleton® MERCMaster II mounts	LPCL 50 75 J
VMM3KP	Tank adapter to Appleton® MERCMaster III mounts	KPCL 50 75 J5 MT
VMHLDS	Tank adapter to Hazlux®3 mounts	DS015 H040-TGL-P2 E1 F
VMHPP2	Tank adapter mount to Holophane® Petrolux™	PETL 250HP 27 S25 CD
VMGEH2	Tank adapter H2 mount to GE® H2 Filtr-gard™	H2 4 05L 3C GG





## EXPLOSION-PROOF – INTRODUCTION & LOGIC



Class I, Div. 1 & 2, Groups C,D  
 Class I, Zones 1 & 2, Groups IIB, IIA  
 Class II, Div. 1 & 2, Groups E,F,G  
 Class III, Div. 1 & 2  
 Suitable for wet locations  
 Suitable for Paint Spray Booth  
 Marine Rated (US only)  
 Type 3, 4, 4X  
 Factory Sealed

Certified - File LR11713

### HOSTILELITE® LED

#### FEATURES-SPECIFICATIONS

##### Applications

HostileLite® EML LED Series fixtures are designed for installations where moisture, dirt, dust, corrosion and vibration may be present, or Type 3 and 4X areas where wind, water, snow, or high ambients can be expected. They can be used in locations made hazardous due to the presence of flammable or explosive gases, vapors and combustible dusts as defined by the NEC.

Applications include classified areas such as paint manufacturing plants, ammunition facilities, oil and gas producing and refining plants, off-shore and dockside installations, tank farms, pipeline pumping stations and marine loading and fuel transfer terminals.

##### Compliances

- UL-8750 for LED lighting
- UL-844 Electric Lighting Fixtures for use in Hazardous Locations
- UL Marine Type Electric Lighting Fixtures
- CSA C22.2 no. 137-M1981 Electric Luminaires for use in Hazardous Locations
- Type 3, 4, 4X, 7CD, 9EFG

##### Materials

- Housing, splice box and guards corrosion resistant copper-free aluminum alloy
- Baked powder epoxy/polyester finish, electrostatically applied for complete, uniform corrosion protection
- All external hardware – Stainless Steel
- Reflectors are aluminum with white finish

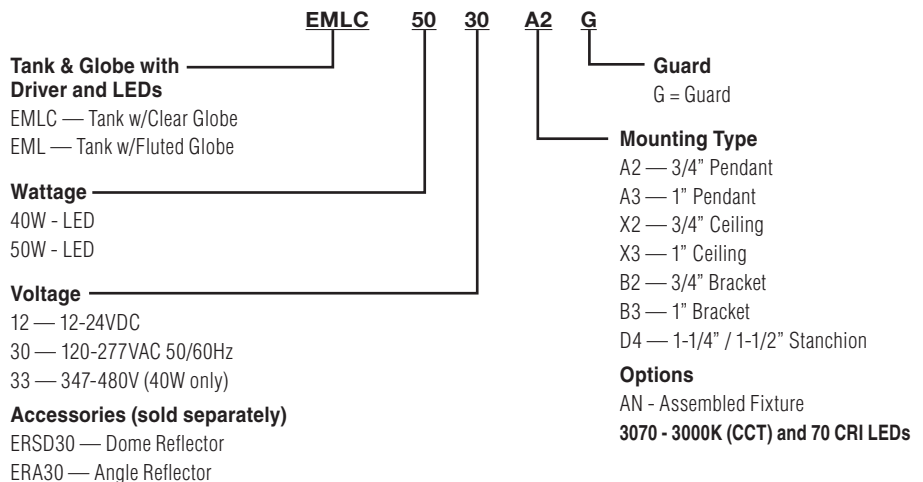
#### LED Luminaire Features and Standards

- Compact Explosion-proof with Traditional Industrial Appearance and Suitability
- Fluted or Exclusive Clear Globe; Dome or Angle Reflectors
- Optional Mounting arrangements including Pendant, Wall, Ceiling, and Stanchion
- EML LED Housings can be retrofitted to existing EZ splice boxes; upgrade from Incandescent, Fluorescent or HID
- Energy Savings – Less than 55 Watts of Power
- LED Array Life – 100,000+ hours with 70% initial lumens
- Long Fixture Life – 50,000 - 55,000 maintenance free hours

- Crisp White Light for Excellent Color Rendering – Chromaticity 5000K (CCT range; approx. 70 CRI)
- Ambient suitability -40°C to 55°C
- Instant on – Including after power interruption
- “World Voltage” 120-277VAC 50/60Hz
- Solder-LESS LED Board Connections – Vibration Resistant
- Factory Sealed Construction – No external seal required, simply wire mouting cap and thread-in fixture to install
- **Warm LED color option available with 3070**

Suitable for Paint Spray Booth Applications

#### Catalog Number Logic





### EXPLOSION-PROOF – COMPONENTS & RATINGS



EZ MOUNTING BRACKETS				
CATALOG NUMBER				HUB SIZE
PENDANT	CEILING	WALL	STANCHION	
EZA2	EZX2	EZB2	—	3/4"
EZA3	EZX3	EZB3	—	1"
—	—	—	EZD4*	1-1/4" / 1-1/2"*

\* 1-1/2" furnished with 1-1/2" - 1-1/4" reducer

EML - EMLC LED ACCESSORIES	
DESCRIPTION	CATALOG NUMBER
Guard	EMG2
Dome Reflector	ERSD30
Angle Reflector	ERA30
CIDI C2D1 N4X Photocell 120VAC	VMHKPC1
CIDI C2D1 N4X Photocell 208-277VAC	VMHKPC2
Replacement Fluted Globe & Support	EMGS3
Replacement Clear Globe & Support	EMGS2
Adapter to old Killark "H" Series or Crouse Hinds®	EAC/EACH



TYPICAL WEIGHTS (LBS.) W/STANDARD GLOBE AND GUARD - EML (C) SERIES			
Pendant 29.33	Ceiling 31.79	Wall 33.25	Stanchion 30.94



## EXPLOSION-PROOF – INTRODUCTION & LOGIC



Class I, Div. 1 & 2, Groups C,D  
 Class I, Zones 1 & 2, Groups IIB, IIA  
 Class II, Div. 1 & 2, Groups E,F,G  
 Class III, Div. 1 & 2  
 Suitable for wet locations  
 Suitable for Paint Spray Booth  
 Marine Rated (US only)  
 Type 3, 4, 4X  
 Factory Sealed

Certified - File LR11713

### HOSTILELITE® LED

#### FEATURES-SPECIFICATIONS

##### Applications

HOSTILELITE® EZL Series high wattage LED fixtures are designed for installations where moisture, dirt, dust, corrosion and vibration may be present, or Type 3 and 4X areas where wind, water, snow or where high ambient temperatures can be expected. They can be used in locations made hazardous due to the presence of flammable or explosive gases, vapors and combustible dusts as defined by the NEC.

Typical applications include classified areas such as paint manufacturing plants, paint spray, oil and gas producing and refining plants, off-shore and dockside installations, tank farms, pipeline pumping stations and marine loading and fuel transfer terminals.

##### Compliances

- UL-8750 for LED lighting
- UL-844 Electric Lighting Fixtures for use in Hazardous Locations
- UL Marine Type Electric Lighting Fixtures
- CSA C22.2 no. 137-M1981 Electric Luminaires for use in Hazardous Locations
- Type 3, 4, 4X, 7CD, 9EFG

##### Materials

- Housing, splice box, and guards corrosion resistant copper-free aluminum alloy
- Baked powder epoxy/polyester finish, electrostatically applied for complete, uniform corrosion protection
- All external hardware – Stainless Steel
- Reflectors are aluminum with white finish

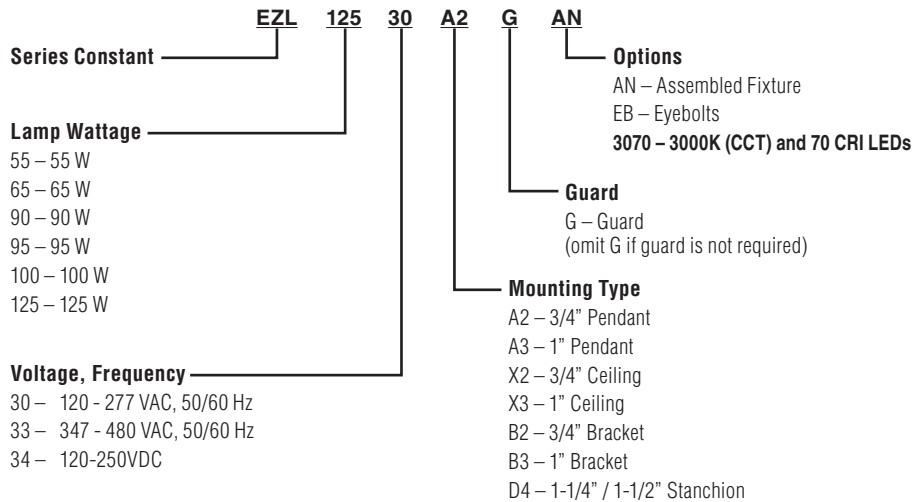
#### LED Luminaire Features and Standards

Supplemental **20KA/10KV Surge Protection** is **standard** (for 120-277 VAC models)  
**10KA/10KV Surge Protection** (for 347-480 VAC)

- Explosion-proof with Traditional Industrial Appearance and Suitability
- Mounting choice – Pendant, ceiling, 25° stanchion or 90° wall mount, all with “wireless” design that allows fast, easy fixture installation or removal for maintenance.
- Accessories – Available with or without guard, standard dome or angle reflector
- EZL LED Housings can be retrofitted to existing EZ splice boxes; upgrade from Incandescent, Fluorescent or HID
- Energy Savings – Less than 130 Watts of Power

- LED Array Life – 100,000+ hours with 70% initial lumens
- Long Fixture Life – 50,000 - 55,000 maintenance free hours
- Crisp White Light for Excellent Color Rendering – Chromaticity 5000K (CCT range; approx. 70 CRI)
- Ambient suitability -40°C to 55°C
- Instant on – Including after power interruption
- “World Voltage” 120-277VAC 50/60Hz
- Solder-LESS LED Board Connections – Vibration Resistant
- Factory Sealed Construction – No external seal required, simply wire routing cap and thread-in fixture to install
- **Warm LED color option available with 3070**

#### Catalog Number Logic





### FIXTURE ADAPTERS



EAC/EACH



EZBA12

Class I, Div. 1 & 2, Group D  
 Class I, Zones 1 & 2, Groups IIA  
 Class II, Div. 1 & 2, Groups E,F,G  
 Class III



### FEATURES-SPECIFICATIONS

# HOSTILELITE®

#### Applications

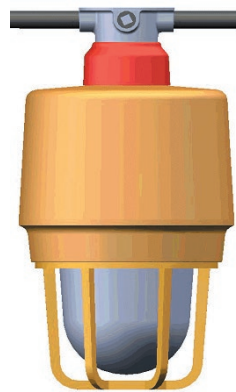
EAC Series adapters are designed to ease upgrading of existing Crouse-Hinds® “EV” series or existing Killark “H” series to Killark HOSTILELITE® EML or EZL series. Units are primarily designed to aid replacement of old ceiling or wall mount units where removal of the existing mounting box and conduit would be difficult or time consuming. Adapter & Killark fixtures rated Type 4.

Adapters are used with Fixture Housing, Globe, Globe Support assemblies. Complete fixture with mounting box is not required. Adapters are painted to match Killark beige fixture finish.

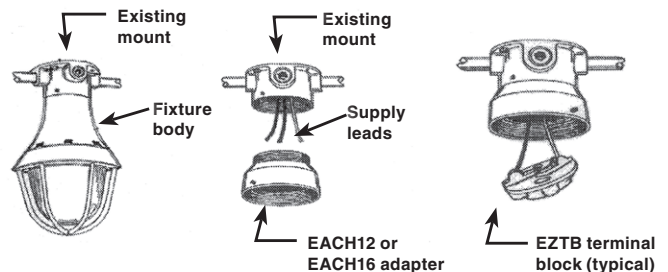
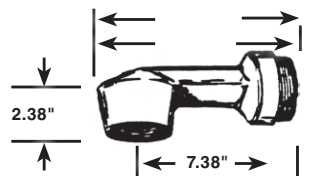
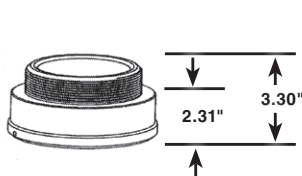
#### Features

- Setscrews permit secure adapter attachment into old mounting box and to new fixture
- Converted fixtures may be easily removed for service using the Killark EZ mounting system. Wire terminals are included in the adapter (EZTB Terminal Block)

EAC / EZBA FIXTURE ADAPTERS		
CATALOG NUMBER	DESCRIPTION	EXAMPLE OF MODEL UTILIZED OR REPLACED
EAC	Killark H series Ceiling or Wall	HXG-2-125 Fixture
EACH12	Crouse old style Ceiling Mount with lamp socket in adapter ring between fixture body and a GUF 12 pitch box	GUF box w/Set Screw
EZBA12	Crouse old style Wall Mount, old style Arm with integral lamp socket (socket in fixture in newer models) attached to GUF 12 pitch mounting box. EZBA12 includes arm	GUF box w/Set Screw
EACH16	Crouse newer style ceiling or wall fixtures w/lamp socket in fixture body; mounted to EV series 16 pitch threaded box; adapter fits in ceiling box or existing arm attached to wall fixture	EVA26/EV22 Box; EVBX240
EAAP-C2	Appleton Code-Master 2	CLC5075



- ← Existing box & conduit
- ← Adapter shown in red for illustration
- ← New Killark EML or EZL series fixture





FLOODLIGHTING

# KILLARK





### C1D2 FLOOD – INTRODUCTION & LOGIC



## PETROBRIGHT® LED

### FEATURES-SPECIFICATIONS

#### Applications

LED Floods are designed for installations where moisture, dirt, dust, corrosion and vibration may be present, or Type 3 and 4X areas where wind, water, snow, or high ambients can be expected. They can be used in locations made hazardous by the presence of flammable vapors or gases or combustible dusts as defined by the NEC/CEC/IECEX/ATEX & INMETRO.

Typical applications include manufacturing plants, and certain chemical and petrochemical processing facilities, sewage treatment plants, off-shore and dockside installations, garages and storage facilities.

#### Compliances

- UL-8750 for LED lighting
- ANSI/UL 1598(A)
- UL-844 Standard for lighting fixtures for hazardous locations, Class I, Division 2; Class II, Divisions 1 and 2; Class III
- CSA C22.2 no. 137-M1981 electric luminaires for use in hazardous locations
- Enclosed and gasketed
- Type 3, 4X
- IP66
- IEX suffix Zone 2/21 to IEC 60079-0, 60079-15, 60079-31 Standards

#### Materials

- Body, end caps and lens frame corrosion resistant copper-free aluminum alloy with baked powder epoxy/polyester finish, electrostatically applied for complete, uniform corrosion protection
- All external hardware - stainless steel
- Thermal shock and impact resistant glass lens
- High temperature silicone gasketing
- Trunnion heavy gauge galvanized steel with painted finish



#### LED Flood Features and Standards

Supplemental **20KA/10KV Surge Protection** is **standard** (for 120-277 VAC models)  
**10KA/10KV Surge Protection** (for 347-480 VAC)

- Crisp White Light for Excellent Color Rendering - Chromaticity 5000K (CCT); approx. 70 CRI
- Energy Savings – High lumens per watt
- LED Array Life – 100,000+ hours with 70% initial lumens
- Long Fixture Life – 50,000 - 55,000 maintenance free hours
- Ambient suitability -50°C to 55°C up to 125W
- Instant On – Including after power interruption
- World Voltage 120 – 277VAC 50/60Hz
- Solder-LESS LED Board Connections – Vibration Resistant
- Standard Fixture is supplied with a single 3/4" NPT entry
- **Warm LED color option available with 3070 option**

**Class I, Div. 2, Groups A,B,C,D**  
**Class II, Div. 1&2, Groups EFG**  
**Class III**  
**Suitable for wet locations**  
**Marine Rated (US Only)**  
**Type 3, 4X**  
**IP66**

CS US File LR11713

**IEC Ex Rated model (w/IEX suffix)**  
**Zone 2 and Zone 21 areas**  
**Ex nA IIC T6...T3, Gc**  
**Ex tb IIIC T160°C Db**  
**Tamb -50°C <Ta<+55°C, IP66**

**IECEX Certificate**  
**CSA 14.0002X**

**ATEX Certificate**  
**CML 14ATEX3087/4088**

**PATENTED LUMINAIRE DESIGN**



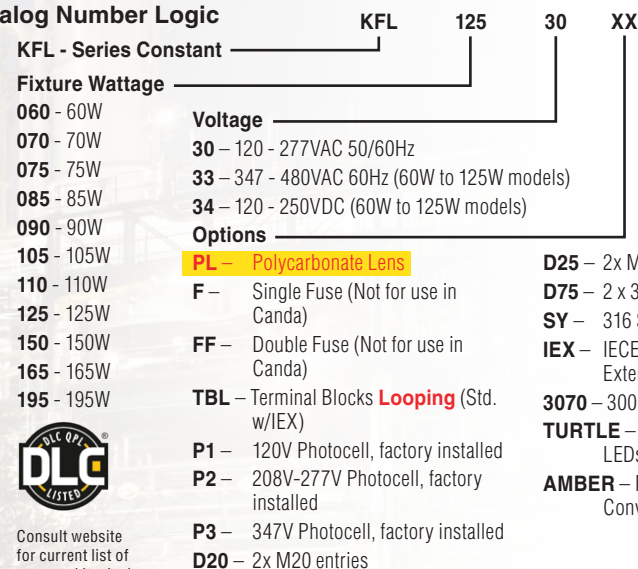
KFL with KFS-6 Slipfitter mount on 2" pipe



Dark Sky Visor KFL-DARK

IEC Units include Qty. 3 6mm terminals plus external ground as standard

#### Catalog Number Logic



Consult website for current list of approved luminaires



## C1D2 FLOOD – INTRODUCTION & LOGIC



Class I, Div. 2, Groups A, B, C, D  
 Class I, Zone 2, IIC, IIB, IIA  
 Class II, Div. 1 & 2, Groups E, F, G  
 Class III  
 Suitable for wet locations  
 Marine Rated (US only)  
 Type 3, 4X  
 IP66

IEC Ex Rated Model (w/ IEX suffix)  
 Zone 2 and Zone 21 areas  
 Ex nA IIC T6...T3, Gc  
 Ex tb IIC T105°C, Db  
 Tamb -50°C < Ta < +55°C, IP66



IECEX Certificate  
 QPS 15.0011

ATEX Certificate  
 CML 15ATEX4079X (nA)  
 &  
 CML 15ATEX3080X (tb)

PATENTED  
 LENS and  
 REFLECTOR  
 DESIGN



KFLH Luminaire

Dark Sky Visor KFLH-DARK

## PETROBRIGHT® LED

### FEATURES-SPECIFICATIONS

#### Applications

LED Floods are designed for installations where moisture, dirt, dust, corrosion and vibration may be present, or Type 3 and 4X areas where wind, water, snow or high ambients can be expected. They can be used in locations made hazardous by the presence of flammable vapors or gases or combustible dusts as defined by the NEC/CEC/IECEX/ATEX & INMETRO.

Typical applications include manufacturing plants, and certain chemical and petrochemical processing facilities, sewage treatment plants, off-shore and dockside installations, garages and storage facilities.

#### Compliances

- UL-8750 for LED lighting
- ANSI/UL 1598(A)
- UL-844 Standard for lighting fixtures for hazardous locations, Class I, Division 2; Class II, Divisions 1 and 2; Class III
- CSA C22.2 no. 137-M1981 electric luminaires for use in hazardous locations
- Enclosed and gasketed
- Type 3, 4X
- IP66

#### Materials

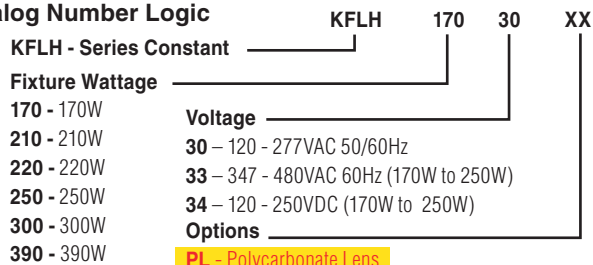
- Body and lens frame corrosion resistant copper-free aluminum alloy with baked powder epoxy/polyester finish, electrostatically applied for complete, uniform corrosion protection
- All external hardware – stainless steel
- Thermal shock and impact resistant glass lens (Polycarbonate available)
- High temperature silicone gasketing
- Trunnion heavy gauge 316 stainless steel

#### LED Flood Features and Standards

Supplemental **20KA/10KV Surge Protection** is standard (for 120-277 VAC models)  
**10KA/10KV Surge Protection** (for 347-480 VAC)

- Crisp White Light for Excellent Color Rendering – Chromaticity 5000K (CCT); approx. 70 CRI
- Energy Savings – High lumens per watt
- LED Array Life – 100,000+ hours with 70% initial lumens
- Long Fixture Life – 50,000 - 55,000 maintenance free hours
- Ambient suitability -40°C to 55°C up to 250W to -50°C for non-hazardous applications
- Instant On – Including after power interruption
- World Voltage 120 – 277VAC 50/60Hz
- Solder-LESS LED Board Connections – Vibration Resistant
- Standard fixture is supplied with dual M20 slip holes with 3/4" NPT hub adapters with one plugged
- Warm LED color option available with 3070

#### Catalog Number Logic



- F - Single Fuse (Not for use in Canada)
- FF - Double Fuse (Not for use in Canada)
- TBL - Terminal Blocks **Looping**
- P1 - 120V Photocell, factory installed
- P2 - 208V-277V Photocell, factory installed
- P3 - 347V Photocell, factory installed
- 3070 - 3000K (CCT) and 70 CRI LEDs
- TURTLE - Wildlife Friendly Amber LEDs
- AMBER - PC Amber (Phosphor Converted) LEDs





### C1D2 FLOOD – INTRODUCTION & LOGIC



Class I, Div. 2, Groups A, B, C, D  
 Class I, Zone 2, IIC, IIB, IIA  
 Class II, Div. 1 & 2, Groups E, F, G  
 Class III  
 Suitable for wet locations  
 Marine Rated (US only)  
 Type 3, 4X  
 IP66

IEC Ex Rated Model (w/ IEX suffix)  
 Zone 2 and Zone 21 areas  
 Ex nA IIC T6...T3, Gc  
 Ex tb IIC T105°C Db  
 Tamb -50°C < Ta < +55°C, IP66

IECEx Certificate  
 QPS 15.0011



ATEX Certificate  
 CML 15ATEX4079X (nA)  
 &  
 CML 15ATEX3080X (tb)

PATENTED LENS and  
 REFLECTOR DESIGN



Dark Sky Visor  
 KFLH-DARK

- Solder-LESS LED Board Connections – Vibration Resistant
- Standard fixture is supplied with dual M20 slip holes with 3/4" NPT hub adapters with one plugged

## PETROBRIGHT® LED

### FEATURES-SPECIFICATIONS

#### Applications

LED Floods are designed for installations where moisture, dirt, dust, corrosion and vibration may be present, or Type 3 and 4X areas where wind, water, snow or high ambients can be expected. They can be used in locations made hazardous by the presence of flammable vapors or gases or combustible dusts as defined by the NEC/CEC/IECEx/ATEX & INMETRO.

Typical applications include manufacturing plants, and certain chemical and petrochemical processing facilities, sewage treatment plants, off-shore and dockside installations, garages and storage facilities.

#### Compliances

- UL-8750 for LED lighting
- ANSI/UL 1598(A)
- UL-844 Standard for lighting fixtures for hazardous locations, Class I, Division 2; Class II, Divisions 1 and 2; Class III
- CSA G22.2 no. 137-M1981 electric luminaires for use in hazardous locations
- Enclosed and gasketed
- Type 3, 4X
- IP66

#### Materials

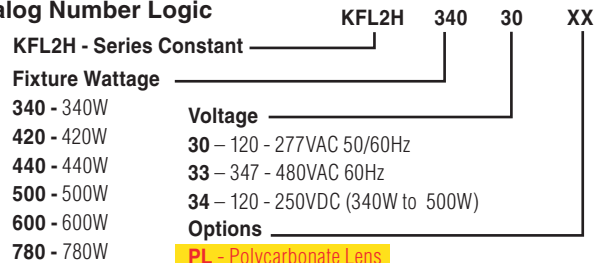
- Body and lens frame corrosion resistant copper-free aluminum alloy with baked powder epoxy/polyester finish, electrostatically applied for complete, uniform corrosion protection
- All external hardware – stainless steel
- Thermal shock and impact resistant glass lens (Polycarbonate available)
- High temperature silicone gasketing
- Trunnion heavy gauge 316 stainless steel

### LED Flood Features and Standards

Supplemental **20KA/10KV Surge Protection** is **standard** (for 120-277 VAC models)  
**10KA/10KV Surge Protection** (for 347-480 VAC)

- Crisp White Light for Excellent Color Rendering – Chromaticity 5000K (CCT); approx. 70 CRI
- Energy Savings – High lumens per watt
- LED Array Life – 100,000+ hours with 70% initial lumens
- Long Fixture Life – 50,000 - 55,000 maintenance free hours
- Ambient suitability -40°C to 55°C up to 500W to -50°C for non-hazardous applications
- Instant On – Including after power interruption
- World Voltage 120 – 277VAC 50/60Hz
- Warm LED color option available with 3070

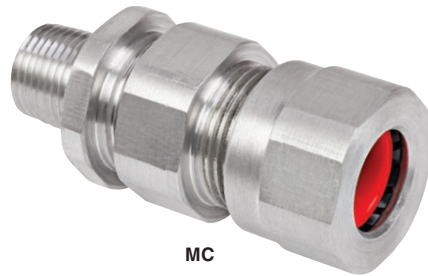
### Catalog Number Logic



- F - Single Fuse (Not for use in Canada)
- FF - Double Fuse (Not for use in Canada)
- TBL - Terminal Blocks **Looping**
- P1 - 120V Photocell, factory installed
- P2 - 208V-277V Photocell, factory installed
- P3 - 347V Photocell, factory installed
- IEX - IEXEx includes TBL & External ground
- 3070 - 3000K (CCT) and 70 CRI LEDs
- TURTLE - Wildlife Friendly Amber LEDs
- AMBER - PC Amber (Phosphor Converted) LEDs



## ALUMINUM CABLE CONNECTORS



MC

Class II, Div. 1 & 2, Groups E, F, G  
 Class III  
 Class I, Zone 2†, Group IIC, Zone 20  
 Suitable for wet locations  
 Types 3, 4X IP66  
 MC5 thru MC0: IPX8 6ft 1hr  
 Suitable for use in hazardous location applications when installed according to NEC Articles 501.10



# CLENCHER®

### FEATURES-SPECIFICATIONS

#### Applications

Designed for use with jacketed interlocked, continuously corrugated and welded armor cable (all types shown in chart below). Install where it is essential to provide positive grounding to the cable and for a Type 3,4 connection.

#### Features

- 360° armor grounding spring is reusable.
- Robust threads and world class seal enables easy installation with minimal torque required.
- Design meets and exceeds third party requirements for cable retention.
- Provides sealing back nut plus inner O-ring seal to prevent moisture ingress to the cable armor and enclosure.
- Copper free aluminum construction for hostile, corrosive and certain hazardous locations

#### Materials

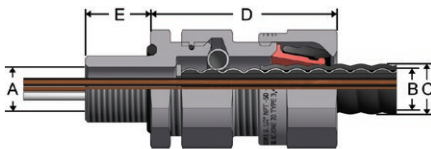
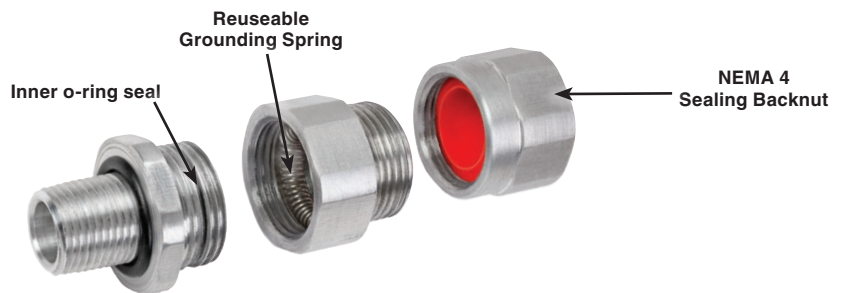
- Body – Copper free aluminum (less than 4/10 of 1%)
- Ground Spring – Stainless Steel
- Backnut Seal – Thermoplastic elastomer (silicone)

- Backnut Clamp – Nylon
- Inner and Outer O-rings – Nitrile

#### Operating Temperature Range

- -50°C to +60°C

#### Construction Details



SUITABLE ARMORED/METAL CLAD CABLE TYPES	
AC-	AC90, ACWU90, AC90-HL, ACWU90-HL, ACG90, ACGWU90
MC-	MCC, MCI, MCI-A, MC-HL
RA-	RA90, RA90-HL
TECK-	TECK90, TECK90-HL

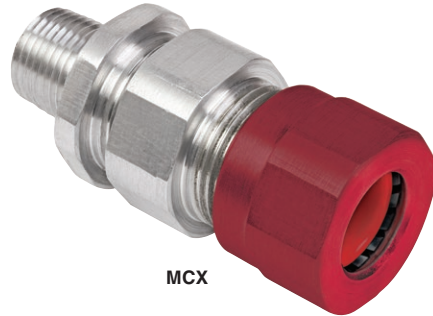
CATALOG NUMBER	ENTRY THREAD SIZE (NPT)	CABLE ACCEPTANCE DETAILS						MAX LENGTH 'D'	NPT LENGTH 'E'	HEXAGON DIMENSIONS	
		MAX NUMBER OF CORES	THROUGH DIAMETER 'A'	ARMOR DIAMETER 'B'		DIAMETER 'C'				ACROSS FLATS	ACROSS CORNERS
				MIN.	MAX.	MIN.	MAX.				
MC1B	1/2"	6	.47" (11.9)	0.43" (10.9)	0.55" (14.0)	0.51" (13.0)	0.63" (16.0)	1.7" (43)	0.83" (21.1)	1.06" (26.9)	1.12" (28.4)
MC1C	1/2"	10	0.56" (14.2)	0.52" (13.2)	0.74" (18.8)	0.60" (15.2)	0.82" (20.8)	2.3" (58)	0.83" (21.1)	1.42" (36)	1.50" (38.1)
MC2	3/4"	21	0.80" (20.3)	0.65" (16.5)	0.95" (24.1)	0.73" (18.5)	1.03" (26.2)	2.5" (64)	0.84" (21.3)	1.61" (41)	1.69" (42.9)
MC3	1"	42	1.04" (26.4)	0.89" (22.6)	1.23" (31.2)	0.97" (24.6)	1.31" (33.3)	2.6" (66)	1.03" (26.2)	1.97" (50)	2.13" (54.1)
MC4	1 1/4"	73	1.28" (32.5)	1.15" (29.2)	1.48" (37.6)	1.23" (31.2)	1.56" (39.6)	3.1" (79)	1.05" (26.7)	2.36" (60)	2.50" (63.5)
MC5	1 1/2"	80	1.66" (42.2)	1.39" (35.3)	1.62" (41.1)	1.47" (37.3)	1.78" (45.2)	4.5" (114.3)	1.07" (27.2)	2.95" (74.9)	3.06" (77.7)
MC6	2"	80	1.98" (50.3)	1.39" (35.3)	1.89" (48)	1.47" (37.3)	2.04" (51.8)	4.5" (114.3)	1.10" (27.9)	2.95" (74.9)	3.06" (77.7)
MC7	2 1/2"	100	2.46" (62.5)	1.85" (47)	2.36" (60)	1.93" (49)	2.51" (63.8)	4.7" (119.4)	1.62" (41.1)	3.54" (89.1)	3.65" (92.7)
MC8	3"	120	2.93" (74.4)	2.19" (55.6)	2.81" (71.4)	2.27" (57.7)	3.01" (76.5)	4.8" (121.9)	1.68" (42.7)	4.06" (103.1)	4.22" (107.2)
MC9	3 1/2"	120	3.40" (86.4)	2.69" (68.3)	3.28" (83.3)	2.77" (70.4)	3.46" (87.9)	4.8" (121.9)	1.73" (43.9)	4.53" (115.1)	4.69" (119.1)
MC0	4"	120	3.92" (99.6)	3.28" (83.3)	3.82" (97)	3.46" (87.9)	4.07" (103.4)	5.1" (129.5)	1.78" (45.2)	5.12" (130)	5.33" (135.4)

Cable armor diameter and cable jacket diameter refer to the dimensions across the crest.

† Where explosion proof/flameproof enclosures are being used the MC must be installed in conjunction with an approved sealing fitting. In Division 2 areas the MC can be fitted directly to an enclosure which has no source of ignition.



### ALUMINUM CABLE CONNECTORS



MCX

**CLENCHER<sup>®</sup>**

**Class I, Div. 1 & 2, Groups A, B, C, D**  
**Class II, Div. 1 & 2, Groups E, F, G**  
**Class III**  
**Class I, Zones 1 & 2, Group IIC, Zone 20**  
**Types 3, 4X IP66**  
**MCX5-MCX0: IPX8 6ft/1hr.**



#### FEATURES-SPECIFICATIONS

##### Applications

Designed for use with jacketed interlocked, continuously corrugated and welded armor cable (all types shown in chart below). Install where it is essential to provide positive grounding to the cable with a complete gas block/explosion proof seal. Also for a Type 3, 4X connection.

##### Features

- 360° armor grounding spring is reusable.
- Robust threads and world class seal enables easy installation with minimal torque required.
- Provides a barrier seal between the individual insulated cores within the cable and prevents entry of the products of an explosion into the cable.
- Assembly of the cable gland compresses and distributes the compound evenly to create a barrier seal at the point of entry into the enclosure.

- Provides cable retention and a low smoke and fume, zero halogen seal onto the cables outer sheath.
- Provides sealing back nut plus inner O-ring seal to prevent moisture ingress to the cable armor and enclosure
- Copper free aluminum construction for harsh, corrosive and hazardous duty
- Back nut is RED to indicate HAZARDOUS area product

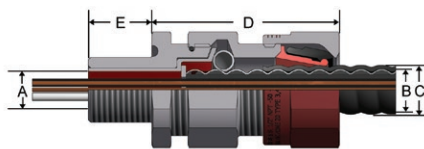
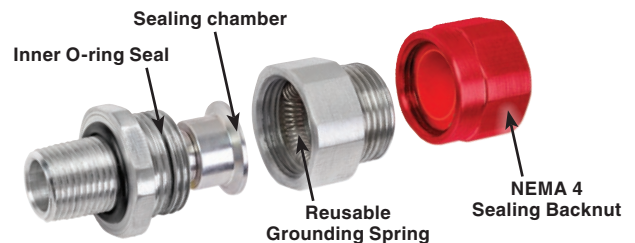
##### Materials

- Body – Copper free aluminum (less than 4/10 of 1%)
- Ground Spring – Stainless Steel
- Backnut Seal – Thermoplastic elastomer (silicone)
- Backnut Clamp – Nylon
- Inner and Outer O-rings – Nitrile

##### Operating Temperature Range

- -50°C to +60°C

#### Construction Details



SUITABLE ARMORED/METAL CLAD CABLE TYPES	
AC-	AC90, ACWU90, AC90-HL, ACWU90-HL, ACG90, ACGWU90
MC-	MCC, MCI, MCI-A, MC-HL
RA-	RA90, RA90-HL
TECK-	TECK90, TECK90-HL

CATALOG NUMBER	ENTRY THREAD SIZE (NPT)	MAX NUMBER OF CORES	CABLE ACCEPTANCE DETAILS						MAX LENGTH 'D'	NPT LENGTH 'E'	HEXAGON DIMENSIONS	
			THROUGH DIAMETER 'A'	ARMOR DIAMETER 'B'		DIAMETER 'C'		ACROSS FLATS			ACROSS CORNERS	
				MIN.	MAX.	MIN.	MAX.					
MCX1B	1/2"	6	0.39" (9.9)	0.43" (10.9)	0.55" (14.0)	0.51" (13.0)	0.63" (16.0)	2.1" (53.3)	0.83" (21.1)	1.06" (26.9)	1.12" (28.4)	
MCX1C	1/2"	10	0.48" (12.2)	0.52" (13.2)	0.74" (18.8)	0.60" (15.2)	0.82" (20.8)	2.4" (61)	0.83" (21.1)	1.42" (36)	1.50" (38.1)	
MCX2	3/4"	21	0.71" (18.1)	0.65" (16.5)	0.95" (24.1)	0.73" (18.5)	1.03" (26.2)	2.6" (66)	0.84" (21.3)	1.61" (41)	1.69" (42.9)	
MCX3	1"	42	0.96" (26.4)	0.89" (22.6)	1.23" (31.2)	0.97" (24.6)	1.31" (33.3)	2.7" (69)	1.03" (26.2)	1.97" (50)	2.13" (54.1)	
MCX4	1 1/4"	73	1.16" (29.5)	1.15" (29.5)	1.48" (37.6)	1.23" (31.2)	1.56" (39.6)	3.2" (81)	1.05" (26.7)	2.36" (60)	2.50" (63.5)	
MCX5	1 1/2"	80	1.35" (34.3)	1.39" (35.3)	1.62" (41.1)	1.47" (37.3)	1.78" (45.2)	4.5" (114.3)	1.07" (27.2)	2.95" (75)	3.06" (77.8)	
MCX6	2"	80	1.62" (41.1)	1.39" (35.3)	1.89" (48.0)	1.47" (37.3)	2.04" (51.8)	4.5" (114.3)	1.10" (27.9)	2.95" (75)	3.06" (77.8)	
MCX7	2 1/2"	100	2.09" (53.1)	1.85" (47.0)	2.36" (59.9)	1.93" (49.0)	2.51" (63.8)	4.7" (119.4)	1.62" (41.1)	3.54" (90)	3.65" (92.8)	
MCX8	3"	120	2.52" (64.0)	2.19" (55.6)	2.81" (71.4)	2.27" (57.7)	3.01" (76.5)	4.8" (121.9)	1.68" (42.7)	4.06" (103)	4.22" (107.2)	
MCX9	3 1/2"	120	3.01" (76.5)	2.69" (68.3)	3.28" (83.3)	2.77" (70.4)	3.46" (87.9)	4.8" (121.9)	1.73" (43.9)	4.53" (115)	4.69" (119.2)	
MCX0	4"	120	3.50" (88.9)	3.28" (83.3)	3.82" (97.0)	3.46" (87.9)	4.07" (103.4)	5.1" (129.5)	1.78" (45.2)	5.12" (130)	5.33" (135.3)	

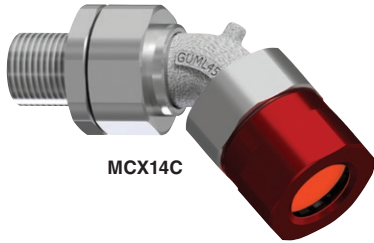
Cable armor diameter and cable jacket diameter refer to the dimensions across the crest.



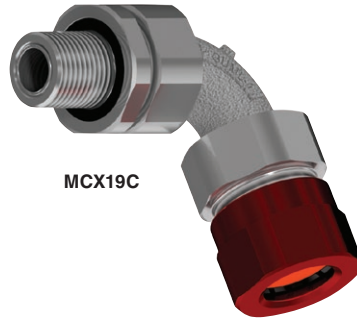
# MCX 45°/90° SERIES

# KILLARK

## ALUMINUM CABLE CONNECTORS



MCX14C



MCX19C

Class I, Div. 1, Groups A, B, C, D  
 Class II, Div. 1, Groups E, F, G  
 Class III,  
 CL. I Zone 1 GR. IIC. Zone 20  
 Types 3, 4X, IP66



### FEATURES-SPECIFICATIONS

#### Applications:

Designed for use with jacketed interlock, continuously corrugated and welded armor cable where it is essential to prevent explosive vapors from passing through electrical devices. This series provides a 45 and 90 degree bend for the most compact space. It is rated for indoor and outdoor use.

#### Features:

- 360° armor grounding spring is reusable
- Provides a barrier seal between the individual insulated cores within the cable
- Assembly of the cable gland compresses and distributes the compound evenly to create a barrier seal at the point of entry into the enclosure.
- Provides a cable retention and low smoke fume, zero halogen seal onto the cables outer sheath
- Copper-free aluminum construction for harsh, corrosive and hazardous areas

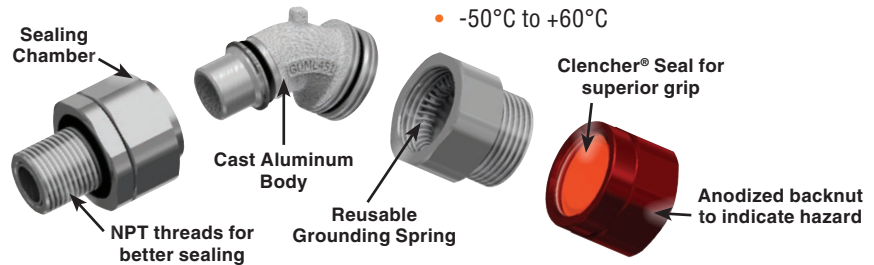
- Patent pending combination union elbow that allows proper 360° alignment where space is limited
- Compact 45° & 90° bends for optimized wiring configurations
- Armor is terminated prior to bend allowing for minimal bending radius
- Backnut is anodized RED to indicate HAZARDOUS area product

#### Materials:

- Body: Copper-free aluminum (less than 4/10 of 1%)
- Backnut Seal: Thermoplastic elastomer (silicone)
- Backnut Clamp: Nylon
- Inner and Outer O-rings: Nitrile

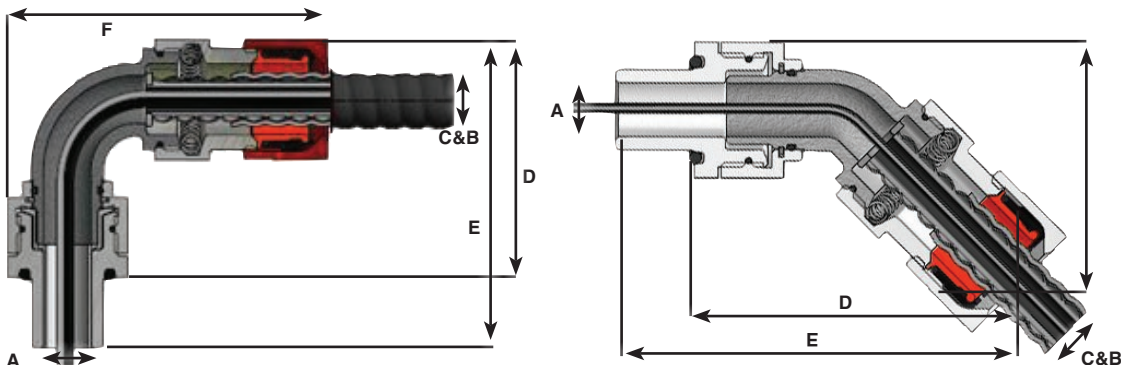
#### Operating Temperature:

- -50°C to +60°C



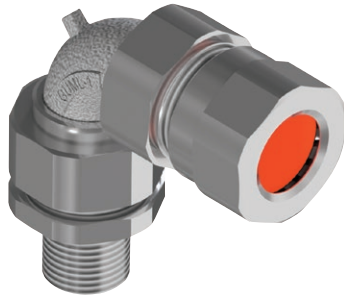
SUITABLE ARMORED/METAL CLAD CABLE TYPES	
AC-	AC90, ACWU90, AC90-HL, ACWU90-HL, ACG90, ACGWU90
MC-	MCC, MCI, MCI-A, MC-HL
RA-	RA90, RA90-HL
TECK-	TECK90, TECK90-HL

CATALOG #	ENTRY THREAD SIZE (NPT)	BEND	CABLE ACCEPTANCE DETAILS						MAX LENGTH 'D'	MAX LENGTH 'E'	MAX LENGTH 'F'
			MAX NUMBER OF CORES	THROUGH DIAMETER 'A'	ARMOR DIAMETER 'B'		DIAMETER 'C'				
					MIN.	MAX.	MIN.	MAX.			
MCX14C	1/2"	45°	10	.48" (12.2)	.52" (13.2)	.74" (18.8)	.60" (15.2)	.82" (20.8)	3.25" (82.6)	4.35" (110.5)	2.05" (52)
MCX24	3/4"	45°	21	.71" (18)	.65" (16.5)	.95" (24.1)	.73" (18.5)	1.03" (26.2)	3.43" (87.1)	4.55" (115.6)	2.19" (55.6)
MCX19C	1/2"	90°	10	.48" (12.2)	.52" (13.2)	.74" (18.8)	.60" (15.2)	.82" (20.8)	2.51" (63.8)	3.62" (91.9)	3.51" (89.2)
MCX29	3/4"	90°	21	.71" (18)	.65" (16.5)	.95" (24.1)	.73" (18.5)	1.03" (26.2)	2.61" (66.3)	3.73" (94.7)	3.60" (91.4)





### ALUMINUM CABLE CONNECTORS



Class II, Div. 1, Groups E, F, G  
 Class III,  
 Zone 20, IP66,  
 Types 3, 4X  
 Suitable for use in hazardous location  
 application when installed according to  
 NEC Articles 501.10



#### FEATURES-SPECIFICATIONS

##### Applications:

Designed for use with jacketed interlock, continuously corrugated and welded armor cable. Rated for indoor and outdoor use and allows for a 45 and 90 degree bend where space is limited.

##### Features:

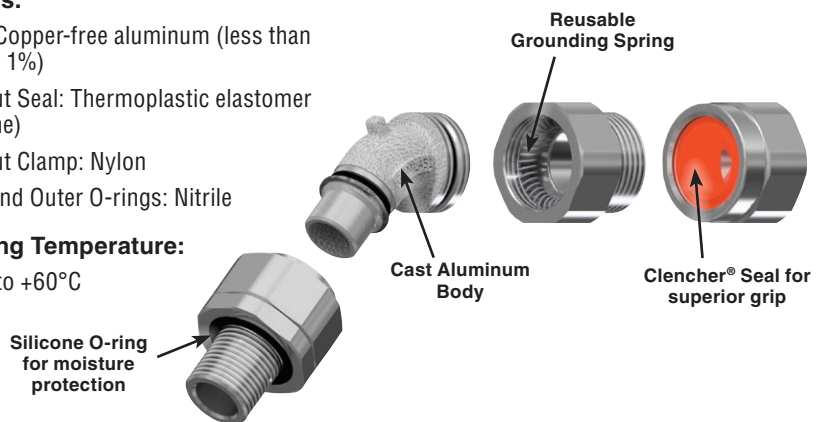
- 360° armor grounding spring is reusable
- Provides sealing backnut plus inner O-ring seal to prevent moisture ingress to the cable armor and enclosure
- Copper-free aluminum construction for harsh, corrosive and hazardous duty
- Patent pending combination union elbow that allows proper 360° alignment where space is limited
- Compact 45° & 90° bends for optimized wiring configurations
- Armor is terminated prior to bend allowing for minimal bending radius

##### Materials:

- Body: Copper-free aluminum (less than 4/10 of 1%)
- Backnut Seal: Thermoplastic elastomer (silicone)
- Backnut Clamp: Nylon
- Inner and Outer O-rings: Nitrile

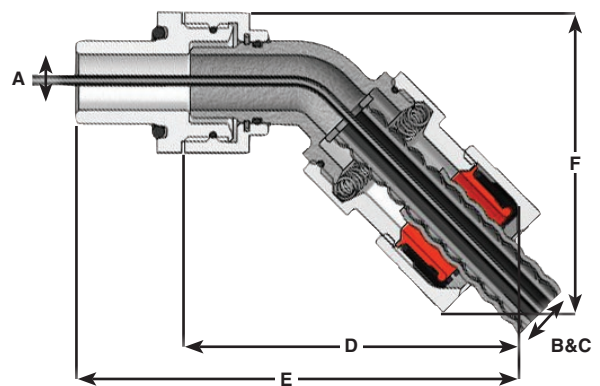
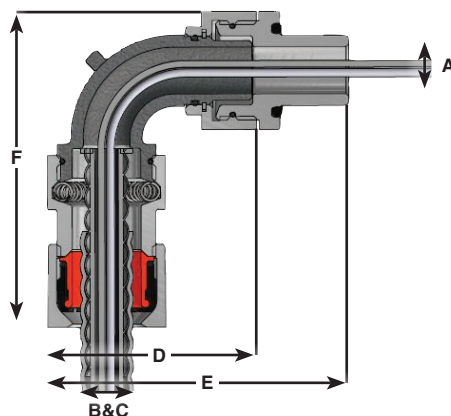
##### Operating Temperature:

- -50°C to +60°C



SUITABLE ARMORED/METAL CLAD CABLE TYPES	
AC-	AC90, ACWU90, AC90-HL, ACWU90-HL, ACG90, ACGWU90
MC-	MCC, MCI, MCI-A, MC-HL
RA-	RA90, RA90-HL
TECK-	TECK90, TECK90-HL

CATALOG NUMBER	ENTRY THREAD SIZE (NPT)	BEND	CABLE ACCEPTANCE DETAILS								
			MAX NUMBER OF CORES	THROUGH DIAMETER 'A'	ARMOR DIAMETER 'B'		DIAMETER 'C'		MAX LENGTH 'D'	MAX LENGTH 'E'	MAX LENGTH 'F'
					MIN.	MAX.	MIN.	MAX.			
MC14C	1/2"	45°	10	.48" (12.2)	.52" (13.2)	.74" (18.8)	.60" (15.2)	.82" (20.8)	3.25" (82.6)	4.35" (110.5)	2.05" (52)
MC24C	3/4"	45°	21	.71" (18)	.65" (16.5)	.95" (24.1)	.73" (18.5)	1.03" (26.2)	3.43" (87.1)	4.55" (115.6)	2.19" (55.6)
MC19C	1/2"	90°	10	.48" (12.2)	.52" (13.2)	.74" (18.8)	.60" (15.2)	.82" (20.8)	2.51" (63.8)	3.62" (91.9)	3.51" (89.2)
MC29	3/4"	90°	21	.71" (18)	.65" (16.5)	.95" (24.1)	.73" (18.5)	1.03" (26.2)	2.61" (66.3)	3.73" (94.7)	3.60" (91.4)







# Hubbell Harsh & Hazardous Contact Details

## United States

### **Killark**

3940 Dr. Martin Luther King Dr.  
St. Louis, Missouri 63113  
Tel: (314) 531-0460 • Fax: (314) 531-7164  
www.hubbell-killark.com  
Email: killarkinfo@hubbell.com

### **RigPower (Hawke International)**

4140 World Houston Parkway, Suite 130  
Houston, TX 77032  
Tel: (281) 445-7400 • Fax: (281) 445-7404  
Email: rigpowerinfo@hubbell.com

### **Vantage Technology**

4140 World Houston Parkway, Suite 130  
Houston, TX 77032  
Tel: (281) 445-7400 • Fax: (281) 445-7404  
Email: xpsales@vantageexp.com

## Canada

### **Hubbell Canada LP**

870 Brock Road South  
Pickering, Ontario  
Canada L1W 1Z8  
Tel: (905) 839-1139 • Fax: (905) 839-9108  
Email: infohclp@hubbell-canada.com

## Mexico

### **Hubbell Products Mexico**

Calle 5 Sur No. 105 Col. Parque  
Ind. Toluca 2000  
Toluca Edo. Mex. CP 50200  
Tel: (01 52) 559-151-9999 • Fax: (01 52) 559-151-9988/89  
www.hubbell.com.mx  
Email: info@hubbell.com.mx

## United Kingdom

### **Hubbell Products**

Brunel Drive  
Stretton Park Burton on Trent  
Straffordshire DE13 0BZ UK  
Tel: +44 (0) 1283 500500 • Fax: +44 (0) 1283 500400  
Email: Sales@hubbell.co.uk

### **Victor Lighting**

PO Box 5571  
Glasgow G52 9AH Scotland  
Tel: +44 (0) 141 810 9644 • Fax: +44 (0) 141 810 9642  
www.victor-lighting.com

### **Chalmit Lighting**

PO Box 5575  
Glasgow G52 9AP Scotland  
Tel: +44 (0) 141 882 5555 • Fax: +44 (0) 141 883 3704  
www.chalmit.com

## Middle East

Office #432, Bldg #6EB  
Dubai Airport Free Zone (DAFZ) • PO Box 23529 Dubai UAE  
Tel: +971 (0) 4 609 1222 • Email: killarkinfo@hubbell.com

## Asia Pacific

130 Joo Seng Road, #03-02, Olivine Building  
Singapore 368357  
Tel: 00 65 6282 2242 • Fax: 00 65 6284 4244  
Email: killarkinfo@hubbell.com

## Korea

512 Hyosung Intellian 681-3 Deungchon Dong  
Kangseo-Ku Seoul 157-030 Korea  
Tel: +82 2 2063 3719 • Fax: +82 2 2603 7386  
Email: killarkinfo@hubbell.com

## China

Room H/I 18F No. 728 Pudong Avenue  
Shanghai International Ocean and Finance Building  
Shanghai 20120 P.R. China  
Tel: (86 21) 3392 6550 ext. 318 • Fax (86 21) 3392 6551  
Email: killarkinfo@hubbell.com



**KILLARK**<sup>®</sup>

3940 Dr. Martin Luther King Drive  
St. Louis, MO 63113  
TEL: (314) 531-0460 FAX: (314) 531-7164  
[www.hubbell-killark.com](http://www.hubbell-killark.com) • [killarkinfo@hubbell.com](mailto:killarkinfo@hubbell.com)

**Hubbell Canada LP**

870 Brock Road South  
Pickering, Ontario L1W 1Z8  
(905) 839-1138  
[infohclp@hubbell-canada.com](mailto:infohclp@hubbell-canada.com)

**Hubbell Products Mexico**

Calle 5 Sur No. 105 Col. Parque  
Ind. Toluca 2000  
Toluca Edo. Mex. CP 50200  
Tel: (01 52) 559-151-9999  
[info@hubbell.com.mx](mailto:info@hubbell.com.mx)

---

**Hubbell<sup>®</sup> Construction and Energy**

A Division of Hubbell, Inc.  
HKMC-LEDWARM 01-19 © Killark, 2019